

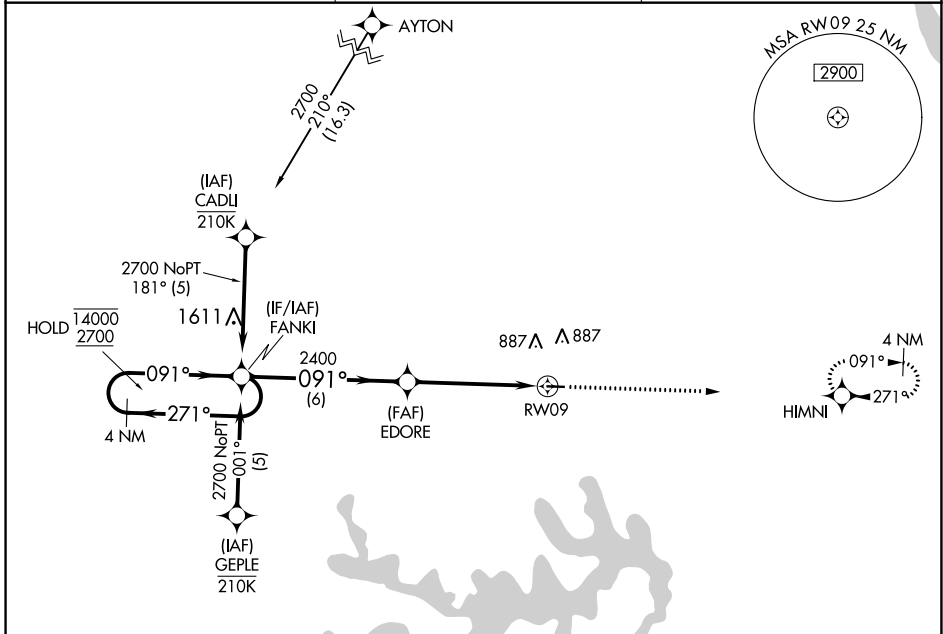
APP CRS	Rwy Idg	3515
091°	TDZE	737
	Apt Elev	737

RNAV (GPS) RWY 9

CPT BEN SMITH AIRFIELD/MONROE CITY (K52)

RNP APCH - GPS.	MISSED APPROACH: Climb to 2600 direct HIMNI and hold.
<p>V Procedure NA at night. Rwy 9 helicopter visibility reduction below 1 SM NA. Use Quincy, IL altimeter setting.</p> <p>A NA</p>	

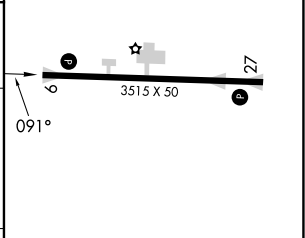
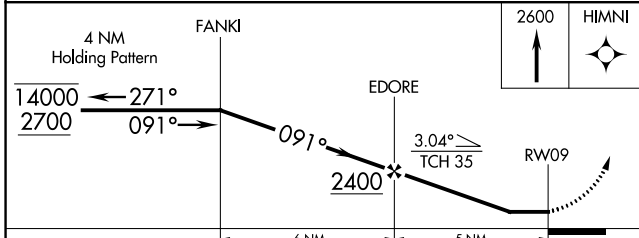
UIN ASOS 121.425	KANSAS CITY CENTER 126.225 317.775	UNICOM 122.8 (CTAF)
----------------------------	--	-------------------------------



NC-3, 26 DEC 2024 to 23 JAN 2025

NC-3, 26 DEC 2024 to 23 JAN 2025

ELEV 737	TDZE 737
----------	----------



CATEGORY	A	B	C	D
LNAV MDA	1280-1	543 (600-1)	1280-1 $\frac{1}{8}$ 543 (600-1 $\frac{1}{8}$)	NA
C CIRCLING	1380-1	643 (700-1)	1380-1 $\frac{3}{4}$ 643 (700-1 $\frac{3}{4}$)	NA



MIRL Rwy 9-27