

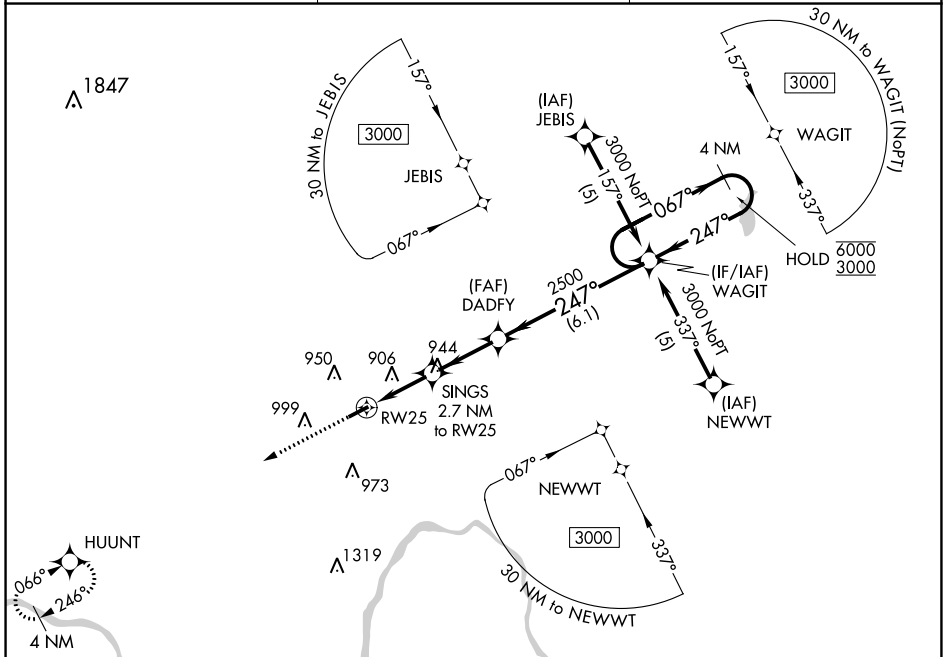
APP CRS <b>247°</b>	Rwy Idg <b>4033</b>
	TDZE <b>764</b>
	Apt Elev <b>775</b>

# RNAV (GPS) RWY 25

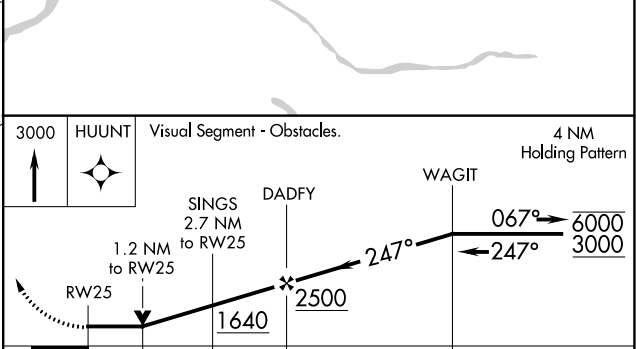
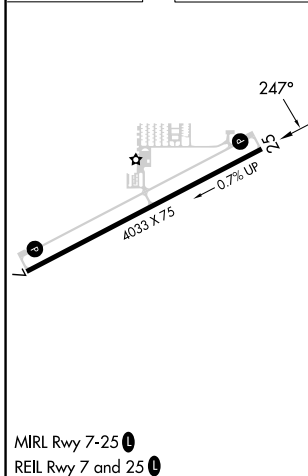
PAUL C MILLER/SPARTA (8D4)

RNP APCH.	<p>▼ Rwy 25 helicopter visibility reduction below 3/4 SM NA. When local altimeter setting not received, use Grand Rapids altimeter setting. VDP NA when using Grand Rapids</p> <p>▲ NA</p>	<p>MISSED APPROACH: Climb to 3000 direct HUUNT and hold.</p>
-----------	--	--

AWOS-3PT <b>126.65</b>	GREAT LAKES APP CON * <b>124.6 257.6</b>	UNICOM <b>122.8 (CTAF) 0</b>
---------------------------	---	---------------------------------



ELEV 775	TDZE 764
----------	----------



CATEGORY	A	B	C	D
LNAV MDA	1240-1	476 (500-1)	NA	
CIRCLING	1300-1 525 (600-1)	1340-1 565 (600-1)	NA	

EC-1, 26 DEC 2024 to 23 JAN 2025

EC-1, 26 DEC 2024 to 23 JAN 2025