

APP CRS	Rwy Idg	4033
066°	TDZE	775
	Apt Elev	775

RNAV (GPS) RWY 7

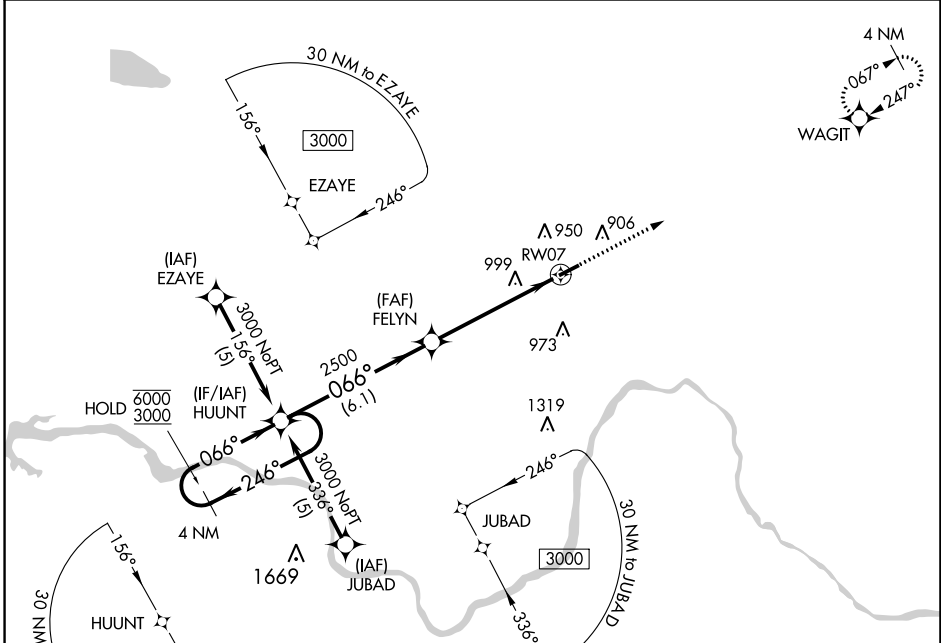
PAUL C MILLER/SPARTA (8D4)

RNP APCH:

▼ Rwy 7 helicopter visibility reduction below 3/4 SM NA. When local altimeter setting not received, use Grand Rapids altimeter setting. VDP NA when using Grand Rapids altimeter setting.
▲NA

MISSED APPROACH: Climb to 3000 direct WAGIT and hold.

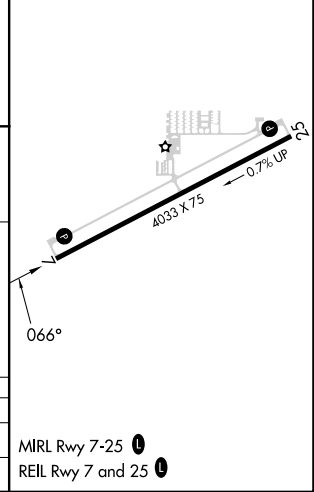
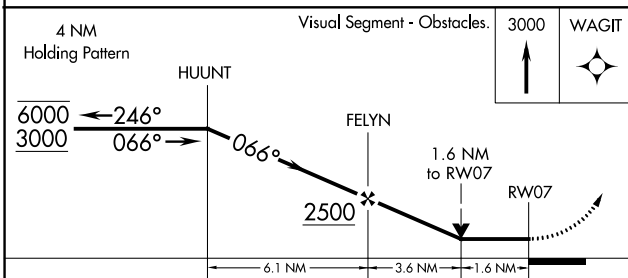
AWOS-3PT 126.65	GREAT LAKES APP CON * 124.6 257.6	UNICOM 122.8 (CTAF) 0
---------------------------	---	---------------------------------



EC-1, 26 DEC 2024 to 23 JAN 2025

EC-1, 26 DEC 2024 to 23 JAN 2025

ELEV 775	TDZE 775
----------	----------



CATEGORY	A	B	C	D
LNAV MDA	1380-1	605 (700-1)		NA
C CIRCLING	1380-1	605 (700-1)		NA

MIRA Rwy 7-25 **0**
 REIL Rwy 7 and 25 **0**