

WAAS CH <b>99707</b> <b>W36A</b>	APP CRS <b>005°</b>	Rwy Idg TDZE Apt Elev	<b>5003</b> <b>979</b> <b>979</b>
--	------------------------	-----------------------------	---

# RNAV (GPS) RWY 36

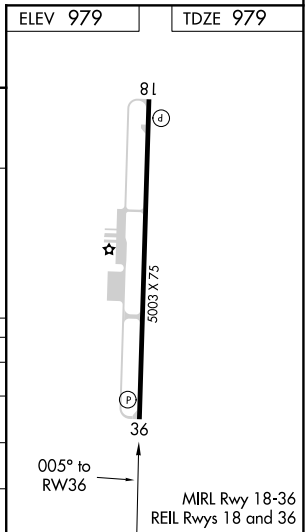
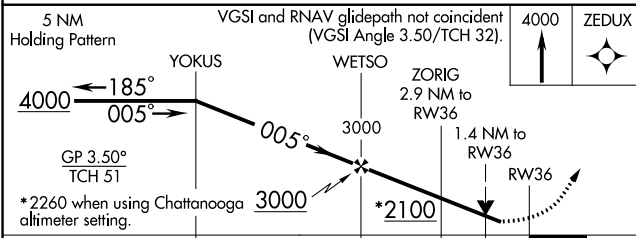
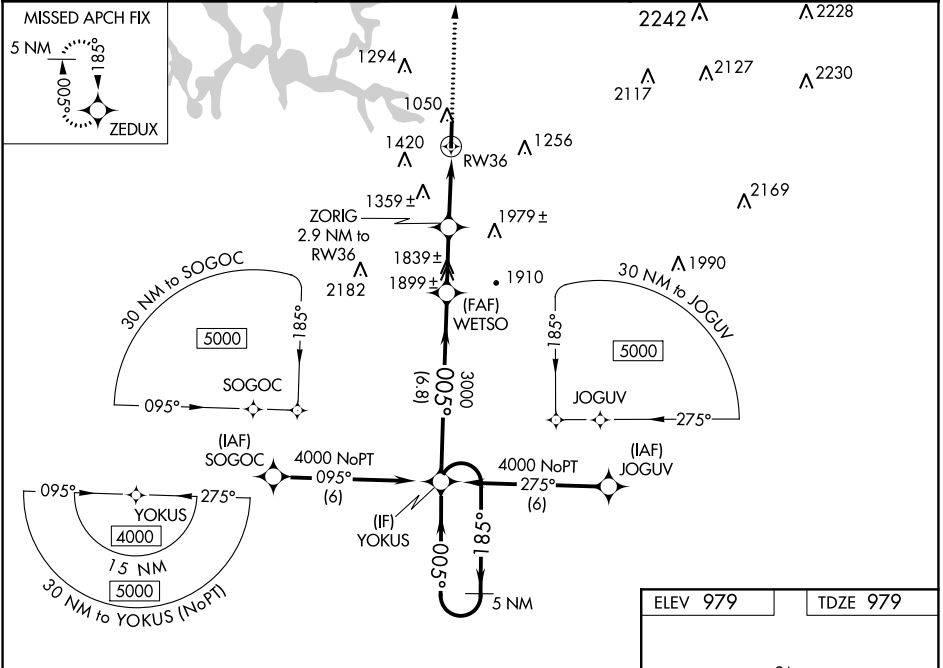
WINCHESTER MUNI (BGF)

RNP APCH - GPS.

**⚠** For uncompensated Baro-VNAV systems, LNAV/VNAV NA below -16° C or above 54° C. When local altimeter setting not received, use Chattanooga altimeter setting: increase LPV DA to 1483 feet and all visibilities 3/8 SM; increase LNAV/VNAV DA to 1510 feet and all visibilities 3/8 SM; increase all MDAs 160 feet and LNAV visibility Cat C 3/8 SM and Circling Cat B/C 1/2 SM. Baro-VNAV and VDP NA when using Chattanooga altimeter setting. Rwy 36 helicopter visibility reduction below 3/4 SM NA.

**MISSED APPROACH:**  
Climb to 4000 direct ZEDUX and hold.

<b>AWOS-3</b> <b>121.675</b>	<b>MEMPHIS CENTER</b> <b>128.15 323.125</b>	<b>GCO</b> <b>121.725</b>	<b>UNICOM</b> <b>122.8 (CTAF)</b>
---------------------------------	--	------------------------------	--------------------------------------



CATEGORY	A	B	C	D
LPV DA	1340-1	361 (400-1)		NA
LNAV/VNAV DA	1367-1 1/8	388 (400-1 1/8)		NA
LNAV MDA	1540-1	561 (600-1)	1540-1 1/8 561 (600-1 1/8)	NA
CIRCLING	1540-1 561 (600-1)	1780-1 801 (900-1)	1820-2 1/2 841 (900-2 1/2)	NA

SE-1, 26 DEC 2024 to 23 JAN 2025

SE-1, 26 DEC 2024 to 23 JAN 2025