

APP CRS	Rwy ldg	4200
343°	TDZE	1047
	Apt Elev	1047

RNAV (GPS) RWY 35

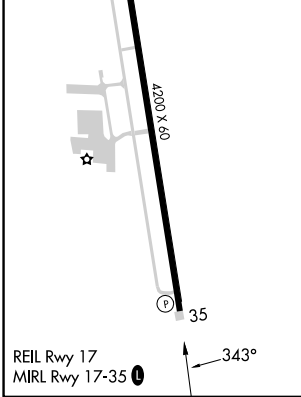
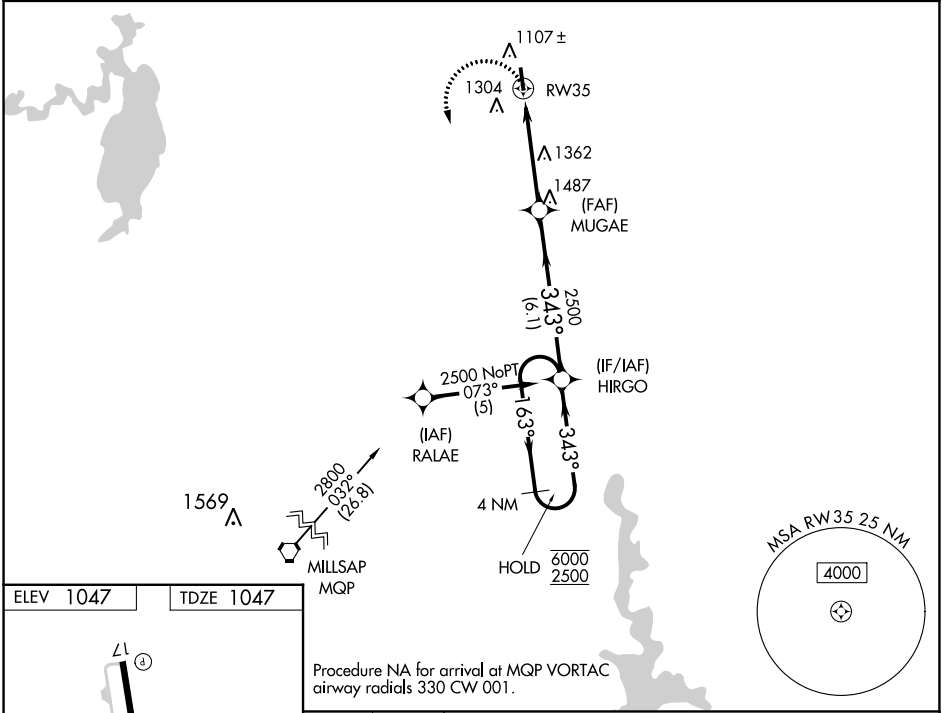
DECATUR MUNI (LUD)

RNP APCH - GPS.

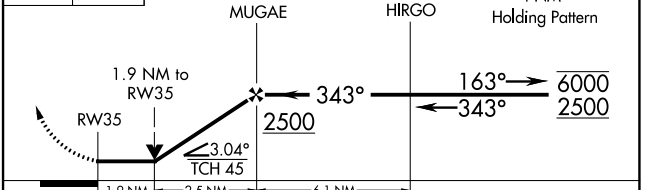
▽ Rwy 35 helicopter visibility reduction below 3/4 SM NA. VDP NA when using Fort Worth Meacham Intl altimeter setting. When local altimeter setting not received, use Fort Worth Meacham Intl altimeter setting and increase all MDAs 120 feet, and LNAV visibility Cat B 1/2 SM, and Circling Cat B 1/4 SM.

▲ MISSED APPROACH: Climbing left turn to 2600 direct HIRGO and hold.

AWOS-3 118.225	LONE STAR APP CON 118.1 306.95	UNICOM 122.8 (CTAF) 0
--------------------------	--	--



2600 HIRGO VGSi and descent angles not coincident (VGSi Angle 3.50/TCH 40).



CATEGORY	A	B	C	D
LNAV MDA	1 680-1	633 (700-1)	NA	
0 CIRCLING	1 680-1	633 (700-1)	NA	

SC-2, 26 DEC 2024 to 23 JAN 2025

SC-2, 26 DEC 2024 to 23 JAN 2025