

VORTAC UKW 117.15 Chan 118 (Y)	APP CRS 137°	Rwy Idg TDZE Apt Elev	4200 1047 1047
---	------------------------	-----------------------------	---

VOR/DME RWY 17

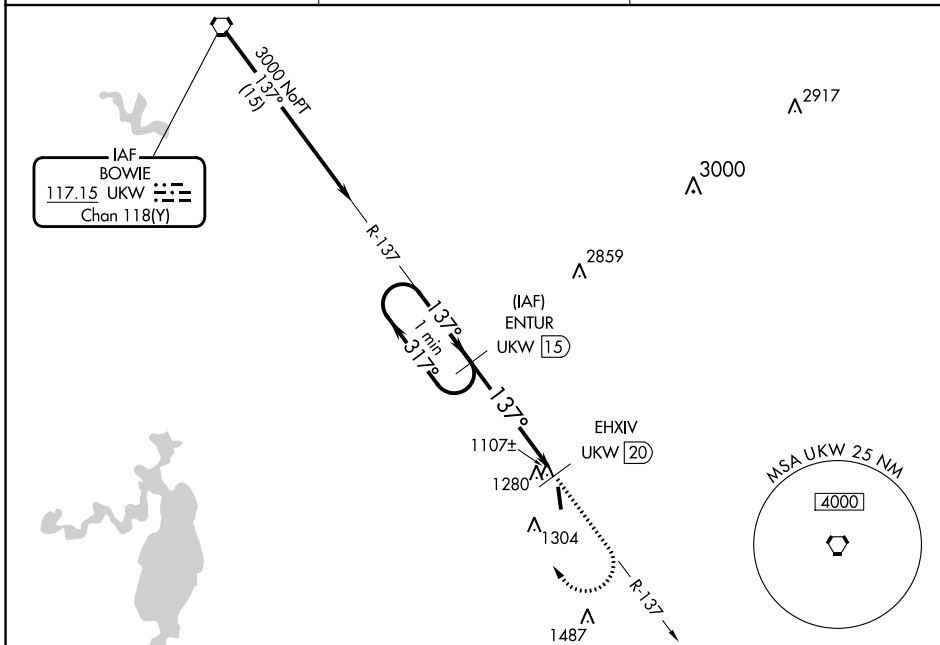
DECATUR MUNI (LUD)

▼ When local altimeter setting not received, use Fort Worth
▲ NA Meacham Intl altimeter setting. MISSED APPROACH: Climb to 2400 then climbing right turn to 3100 via UKW R-137 to ENTUR/1.5 DME and hold.

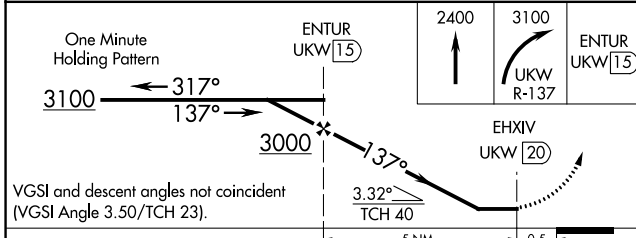
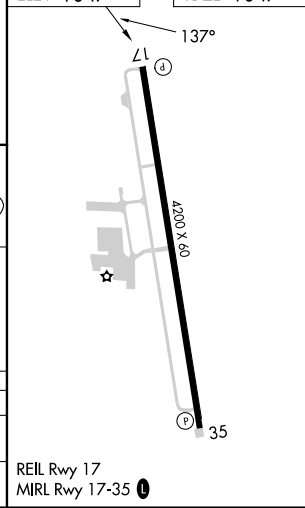
AWOS-3
118.225

LONE STAR APP CON
118.1 306.95

UNICOM
122.8(CTAF) 0



ELEV 1047	TDZE 1047
-----------	-----------



CATEGORY	A	B	C	D
S-17	1700-1 653 (700-1)	1700-1¼ 653 (700-1¼)		NA
C CIRCLING	1800-1 753 (800-1)	1800-1¼ 753 (800-1¼)		NA

REIL Rwy 17
MIRL Rwy 17-35 **0**

SC-2, 26 DEC 2024 to 23 JAN 2025

SC-2, 26 DEC 2024 to 23 JAN 2025