

APP CRS	Rwy Idg	4000
174°	TDZE	247
	Apt Elev	248

RNAV (GPS) RWY 17

PANOLA COUNTY-SHARPE FLD (4F2)

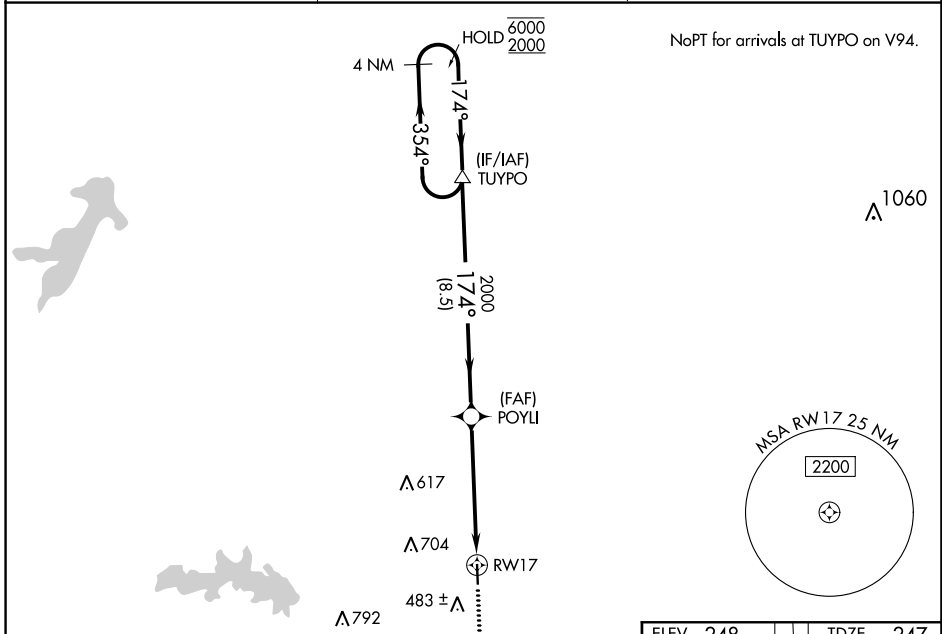
RNP APCH-GPS.
▲ Procedure NA at night. Rwy 17 helicopter visibility reduction below 1 SM NA. When local altimeter setting not received, use Longview altimeter setting.

MISSED APPROACH: Climb to 3800 direct JIPRI and hold, continue climb-in-hold to 3800.

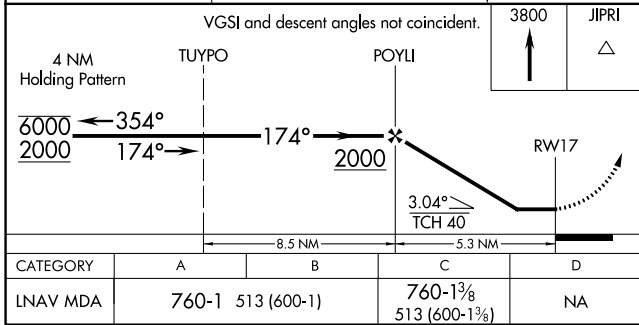
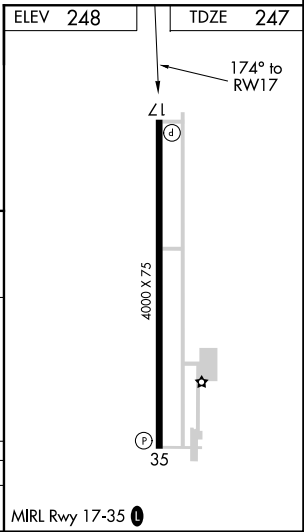
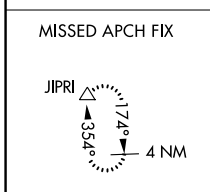
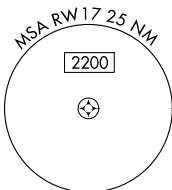
AWOS-3PT
121.125

SHREVEPORT APP CON ★
119.9 335.55

UNICOM
122.8 (CTAF) ①



NoPT for arrivals at TUYPO on V94.



SC-2, 26 DEC 2024 to 23 JAN 2025

SC-2, 26 DEC 2024 to 23 JAN 2025