

APP CRS	Rwy Idg	<b>3196</b>
<b>002°</b>	TDZE	<b>313</b>
	Apt Elev	<b>313</b>

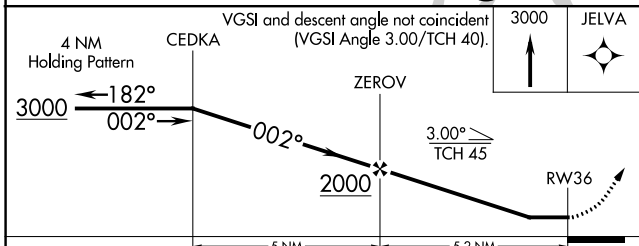
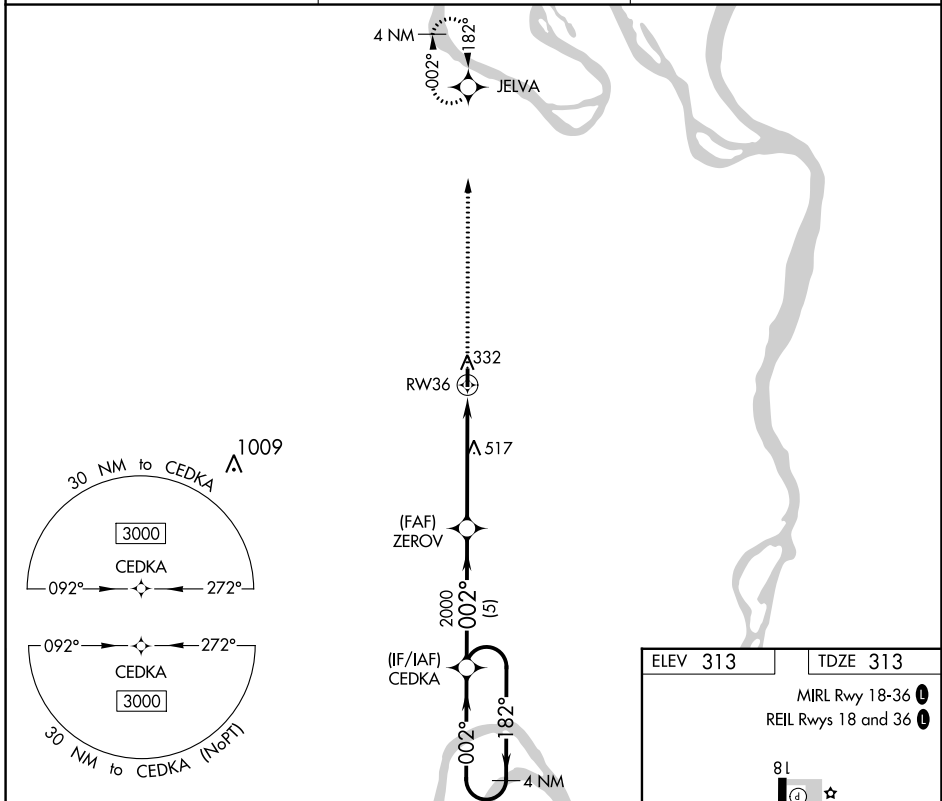
# RNAV (GPS) RWY 36

MISSISSIPPI COUNTY (CHQ)

**NA** DME/DME RNP-0.3 NA. Procedure NA at night. Use Sikeston altimeter setting, when not received use Cairo, IL altimeter setting and increase all MDA 20 feet. Helicopter visibility reduction below 1 SM NA.

**MISSED APPROACH:** Climb to 3000 direct JELVA and hold.

<b>SIK AWOS-3</b> <b>119.175</b>	<b>MEMPHIS CENTER</b> <b>133.65 292.15</b>	<b>CTAF</b> <b>122.9</b>
-------------------------------------	---	-----------------------------



ELEV 313	TDZE 313
MIRL Rwy 18-36	
REIL Rwys 18 and 36	

002° to RWY 36

CATEGORY	A	B	C	D
LNVA MDA	800-1	487 (500-1)		NA
<b>CIRCLING</b>	800-1 487 (500-1)	860-1 547 (600-1)		NA

NC-3, 26 DEC 2024 to 23 JAN 2025

NC-3, 26 DEC 2024 to 23 JAN 2025