

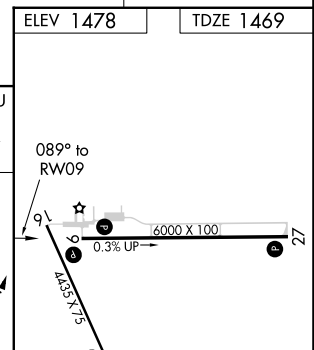
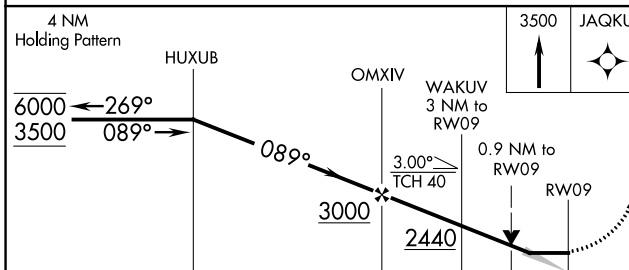
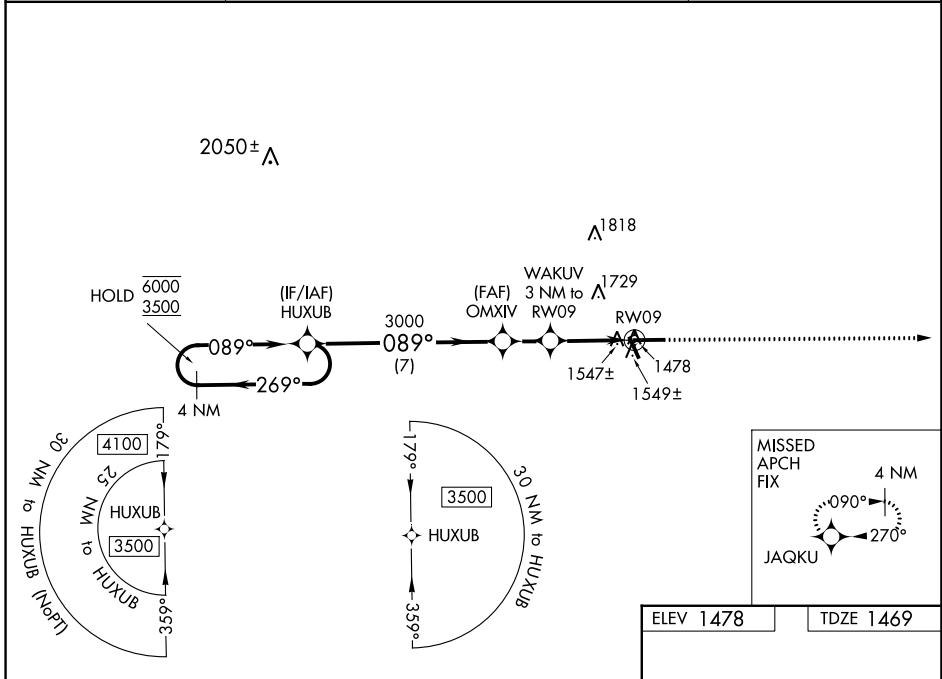
WAAS CH 99331 W09A	APP CRS 089°	Rwy Idg TDZE Apt Elev	6000 1469 1478
--	------------------------	-----------------------------	---

RNAV (GPS) RWY 9

TAYLOR COUNTY (MDZ)

RNP APCH.		MISSED APPROACH: Climb to 3500 direct JAQKU and hold.
-----------	--	---

AWOS-3 119.025	MINNEAPOLIS CENTER 124.4 317.7	UNICOM 122.8 (CTAF)
--------------------------	--	-------------------------------



CATEGORY	A	B	C	D	ELEV 1478	TDZE 1469
LP MDA	1800-1 331 (400-1)					
LNAV MDA	1800-1 331 (400-1)					
CIRCLING	1900-1 422 (500-1)	2040-1 562 (600-1)	2040-1½ 562 (600-1½)	2180-2¼ 702 (800-2¼)	REIL Rwy 9, 27 and 34	MRL Rwy 9-27 and 16-34

EC-3, 26 DEC 2024 to 23 JAN 2025

EC-3, 26 DEC 2024 to 23 JAN 2025