

WAAS CH 56521 W10A	APP CRS 097°	Rwy Idg TDZE Apt Elev	5215 467 501
--	------------------------	-----------------------------	---

RNAV (GPS) RWY 10

THOMSON/McDUFFIE COUNTY (HQU)

RNP APCH.

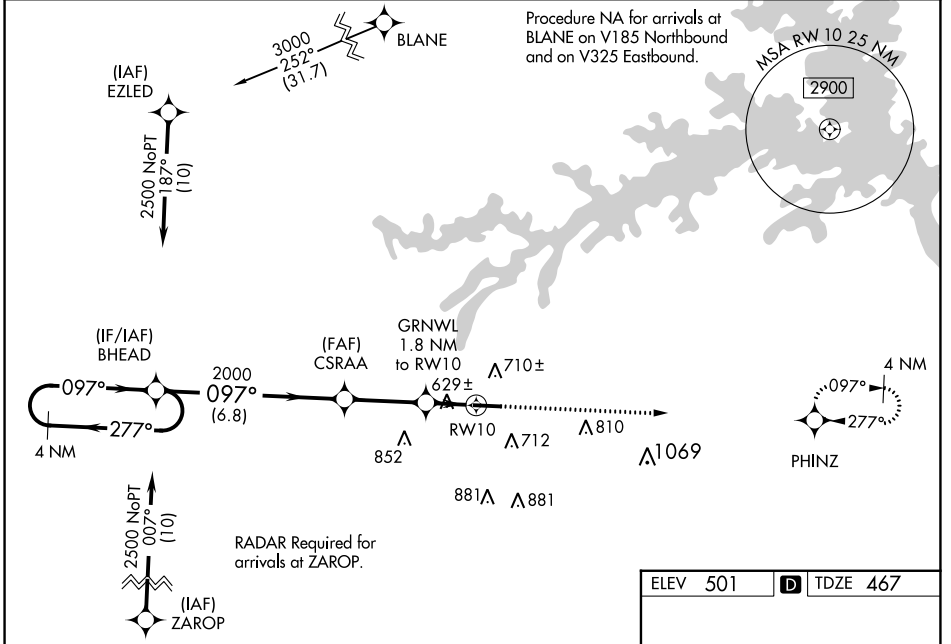
⚠ Baro-VNAV NA when using Daniel Field altimeter setting. For uncompensated Baro-VNAV systems, LNAV/VNAV NA below -15°C (5°F) or above 41°C (105°F). When local altimeter setting not received, use Daniel Field altimeter setting: increase LPV DA to 917 feet and visibility ½ SM, increase LNAV/VNAV DA to 1028 feet; increase all MDAs 80 feet, and visibility LNAV Cats C/D ¼ SM, and Circling Cat C ¼ SM, and Circling Cat D ½ SM.

MISSED APPROACH:
Climb to 2500 direct PHINZ and hold.

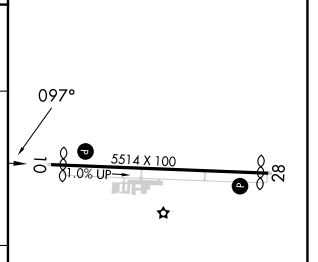
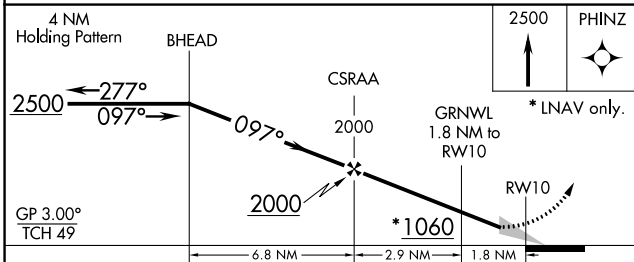
AWOS-3
120.625

AUGUSTA APP CON ★
124.45 270.3

UNICOM
122.8 (CTAF) 0



ELEV 501 **D** TDZE 467



CATEGORY	A	B	C	D
LPV DA		850-1¼	383 (400-1¼)	
LNAV/VNAV DA		961-1½	494 (500-1½)	
LNAV MDA	880-1	413 (400-1)	880-1¼	413 (400-1¼)
C CIRCLING	1060-1 559 (600-1)	1080-1 579 (600-1)	1160-1¾ 659 (700-1¾)	1240-2¼ 739 (800-2¼)

HIRL Rwy 10-28 0