

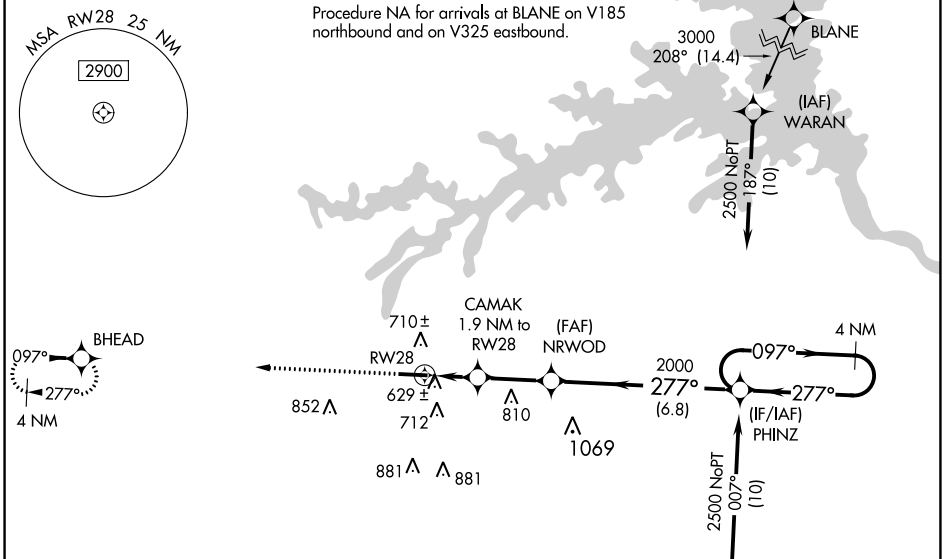
WAAS CH <b>58121</b> <b>W28A</b>	APP CRS <b>277°</b>	Rwy ldg TDZE <b>497</b> Apt Elev <b>501</b>	<b>5179</b>
--	------------------------	--	-------------

# RNAV (GPS) RWY 28

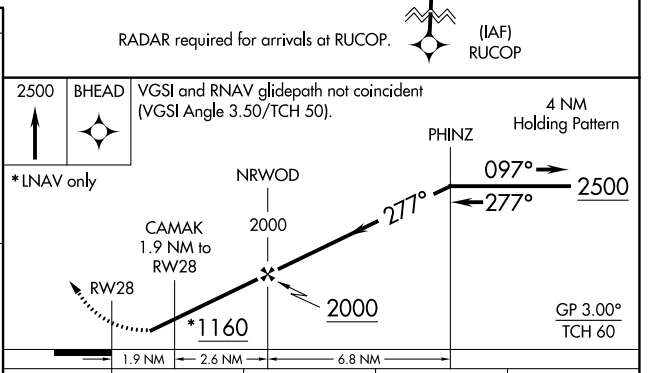
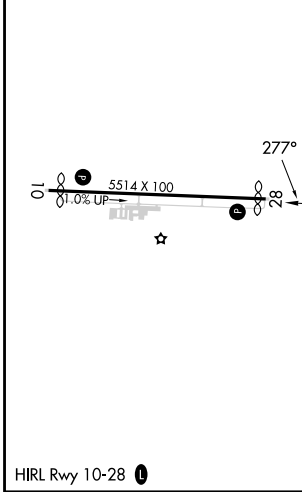
THOMSON/McDUFFIE COUNTY (HQJ)

RNP APCH	<p>Baro-VNAV NA when using Daniel Field altimeter setting. For uncompensated Baro-VNAV systems, LNAV/VNAV NA below -15°C (5°F) or above 54°C (130°F).                  When local altimeter setting not received, use Daniel Field altimeter setting: increase LPV DA to 854 feet and visibility Cats A/B ½ SM, increase LNAV/VNAV DA to 877 feet; increase all MDAs 80 feet and increase visibility LNAV Cats C/D and Circling Cat C ¼ SM, and Circling Cat D ½ SM. Rwy 28 helicopter visibility reduction below ¾ SM NA.</p>	MISSED APPROACH: Climb to 2500 direct BHEAD and hold.
----------	--	---

AWOS-3 <b>120.625</b>	AUGUSTA APP CON * <b>124.45 270.3</b>	UNICOM <b>122.8 (CTAF) 0</b>
--------------------------	--	---------------------------------



ELEV 501	<b>D</b>	TDZE 497
----------	----------	----------



	A	B	C	D
CATEGORY	A	B	C	D
LPV DA	787-7/8	290 (300-7/8)	787-1	290 (300-1)
LNAV/VNAV DA	810-1 313 (400-1)			
LNAV MDA	880-1	383 (400-1)	880-1 1/8	383 (400-1 1/8)
CIRCLING	1060-1 559 (600-1)	1080-1 579 (600-1)	1200-2 699 (700-2)	1240-2 1/4 739 (800-2 1/4)

SE-4, 26 DEC 2024 to 23 JAN 2025

SE-4, 26 DEC 2024 to 23 JAN 2025