

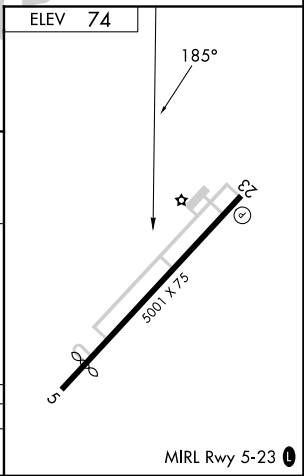
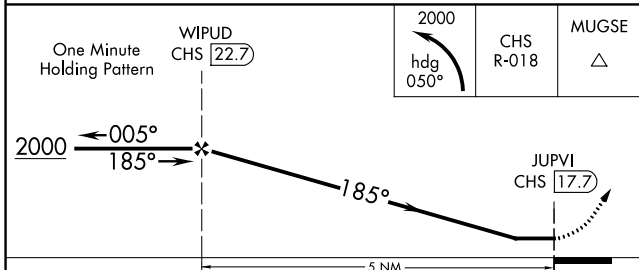
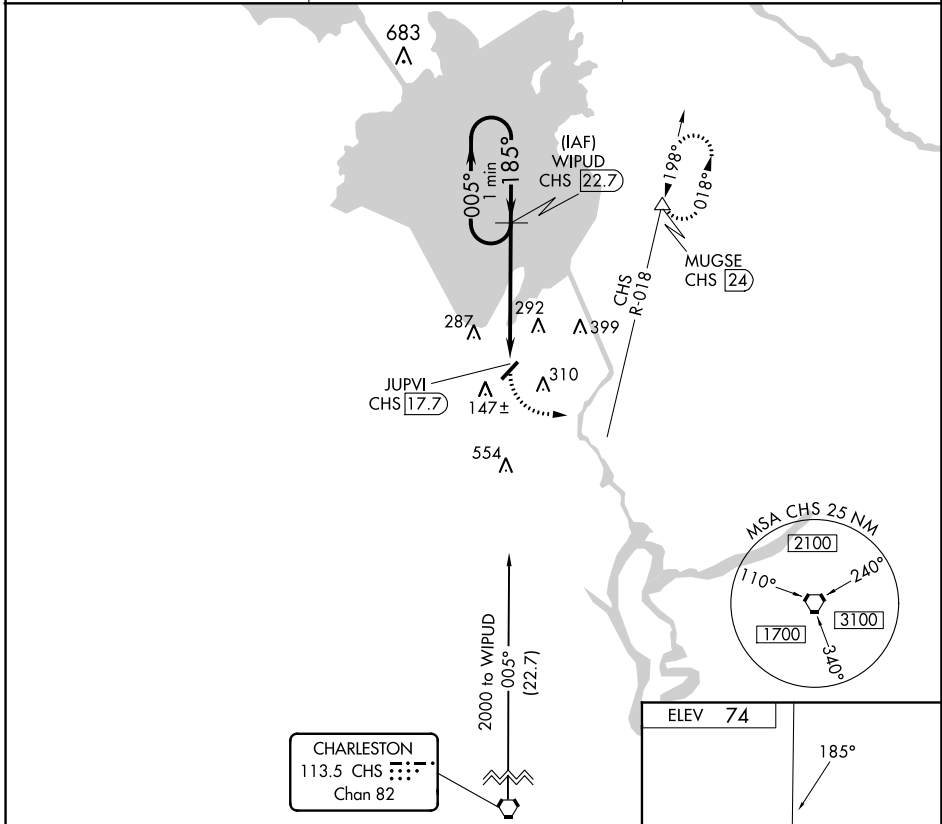
VORTAC CHS <b>113.5</b> Chan <b>82</b>	APP CRS <b>185°</b>	Rwy Idg TDZE Apt Elev	<b>N/A</b> <b>N/A</b> <b>74</b>
--	------------------------	-----------------------------	---------------------------------------

**VOR/DME-A**  
BERKELEY COUNTY (MKS)

**NA** Procedure NA at night. When local altimeter setting not received, use Charleston AFB/Intl altimeter setting: increase all MDA 60 feet and Cat C/D visibility ¼ SM. Helicopter visibility reduction below 1 SM NA.

**MISSED APPROACH:** Climbing left turn to 2000 via heading 050° and CHS R-018 to MUGSE/CHS 24 DME and hold.

AWOS-3 <b>119.175</b>	CHARLESTON APP CON <b>121.275 379.925</b>	UNICOM <b>123.05 (CTAF)</b>
--------------------------	--	--------------------------------



CATEGORY	A	B	C	D
CIRCLING	640-1	566 (600-1)	700-1¾ 626 (700-1¾)	860-2½ 786 (800-2½)

SE-2, 26 DEC 2024 to 23 JAN 2025

SE-2, 26 DEC 2024 to 23 JAN 2025