

WAAS CH <b>77715</b> <b>W03A</b>	APP CRS <b>025°</b>	Rwy Idg TDZE <b>198</b> Apt Elev <b>198</b>	<b>5350</b>
--	------------------------	---	-------------

# RNAV (GPS) RWY 3

COLUMBIA COUNTY (1B1)

RNP APCH.

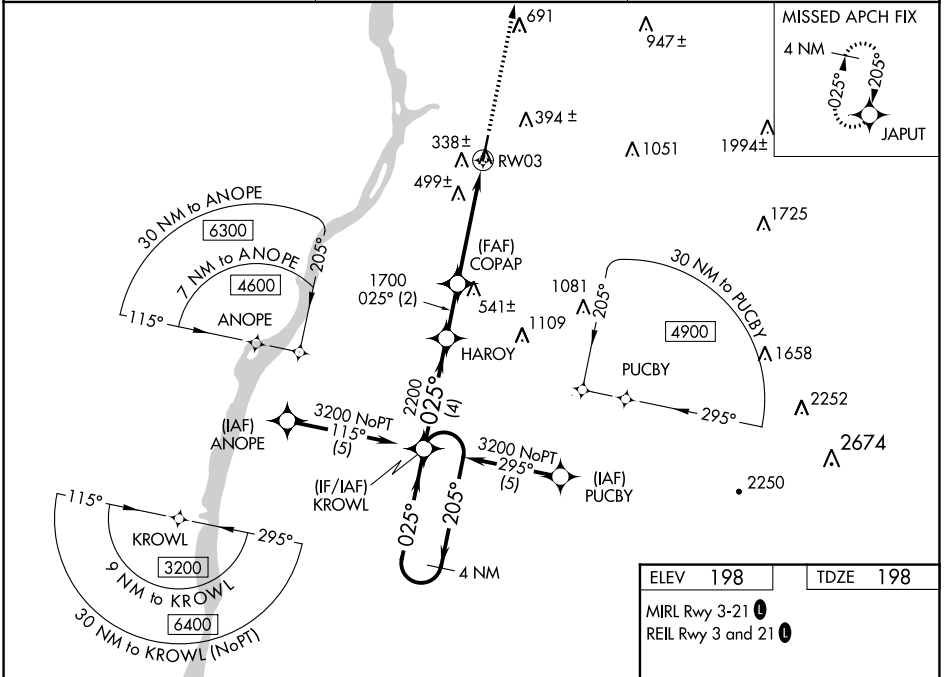
**NA** Baro-VNAV NA when using Albany altimeter setting. For uncompensated Baro-VNAV systems, LNAV/VNAV NA below -15°C (5°F) or above 48°C (118°F). Rwy 3 helicopter visibility reduction below ¾ SM NA. When local altimeter setting not received, use Albany altimeter setting and increase all DA 76 feet and MDA 80 feet, increase LPV all Cats, LNAV/VNAV all Cats, LNAV Cats C/D visibility ¼ mile.

MISSED APPROACH: Climb to 3200 direct JAPUT and hold. continue climb-in-hold to 3200.

AWOS-3  
**133.525**

ALBANY APP CON  
**132.825 307.2**

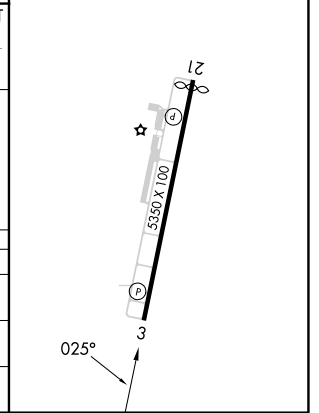
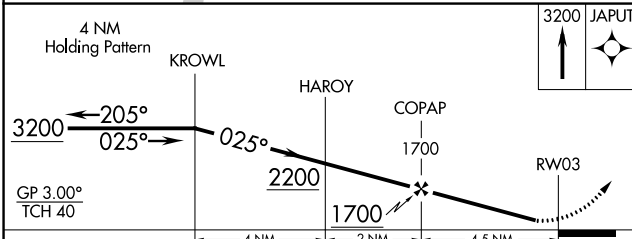
UNICOM  
**123.05 (CTAF)**



NE-2, 26 DEC 2024 to 23 JAN 2025

NE-2, 26 DEC 2024 to 23 JAN 2025

ELEV <b>198</b>	TDZE <b>198</b>
MIRL Rwy 3-21	REIL Rwy 3 and 21



CATEGORY	A	B	C	D
LPV DA	500-1 302 (400-1)			
LNAV/VNAV DA	842-2¼ 644 (700-2¼)			
LNAV MDA	760-1 562 (600-1)	760-1½ 562 (600-1½)		760-1¾ 562 (600-1¾)