

APP CRS	Rwy Idg	3280
134°	TDZE	1161
	Apt Elev	1174

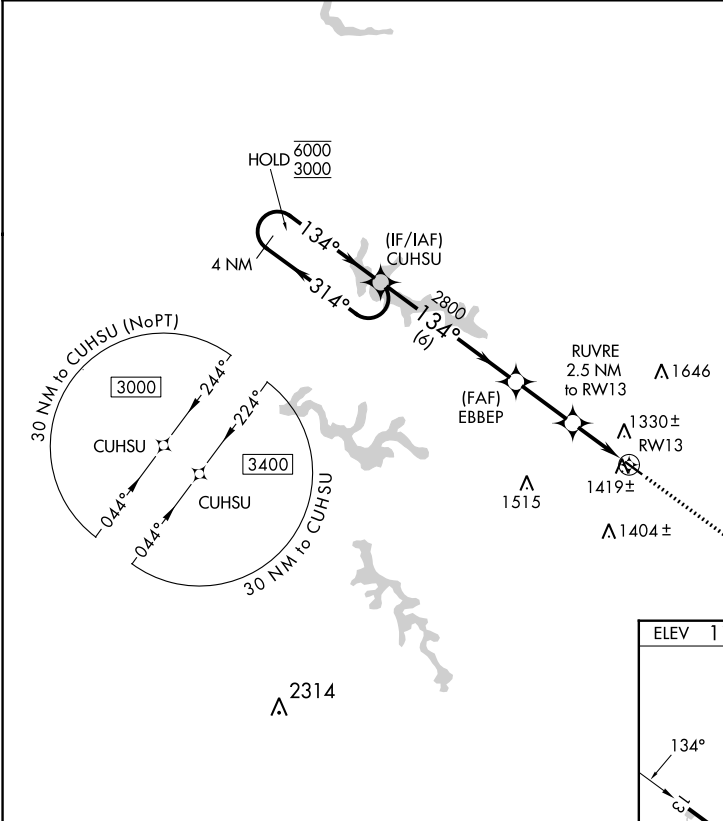
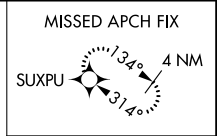
RNAV (GPS) RWY 13

HARRISON COUNTY (8G6)

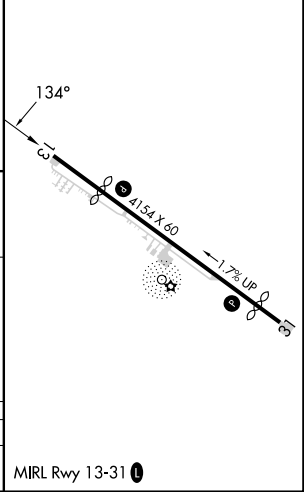
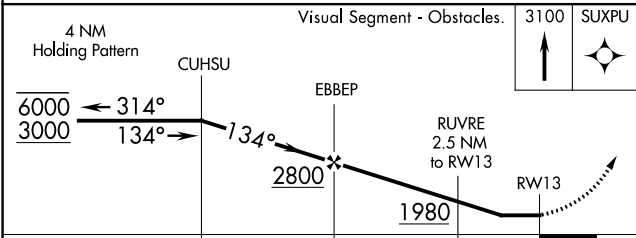
RNP APCH.
 ▽ Rwy 13 helicopter visibility reduction below 1 SM NA. Use Wheeling altimeter setting; when not received, use Washington altimeter setting and increase all MDA 40 feet. Procedure NA at night.
 ▲ NA

MISSED APPROACH: Climb to 3100 direct SUXPU and hold.

HLG ASOS 127.375	CLEVELAND CENTER 126.95 239.30	UNICOM 122.8 (CTAF) 0
----------------------------	--	---------------------------------



ELEV 1174	TDZE 1161
-----------	-----------



CATEGORY	A	B	C	D
LNAV MDA	1720-1	559 (600-1)	NA	

EC-2, 26 DEC 2024 to 23 JAN 2025

EC-2, 26 DEC 2024 to 23 JAN 2025