

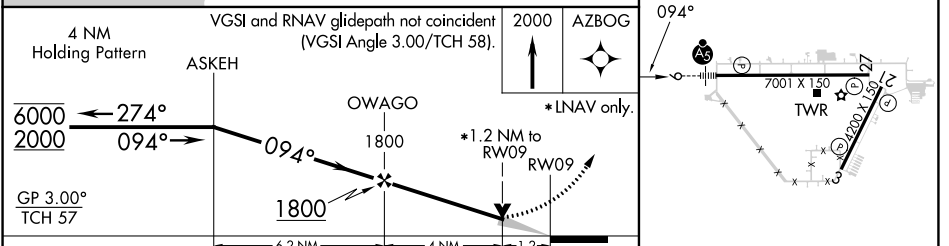
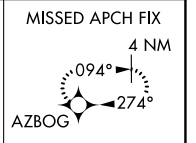
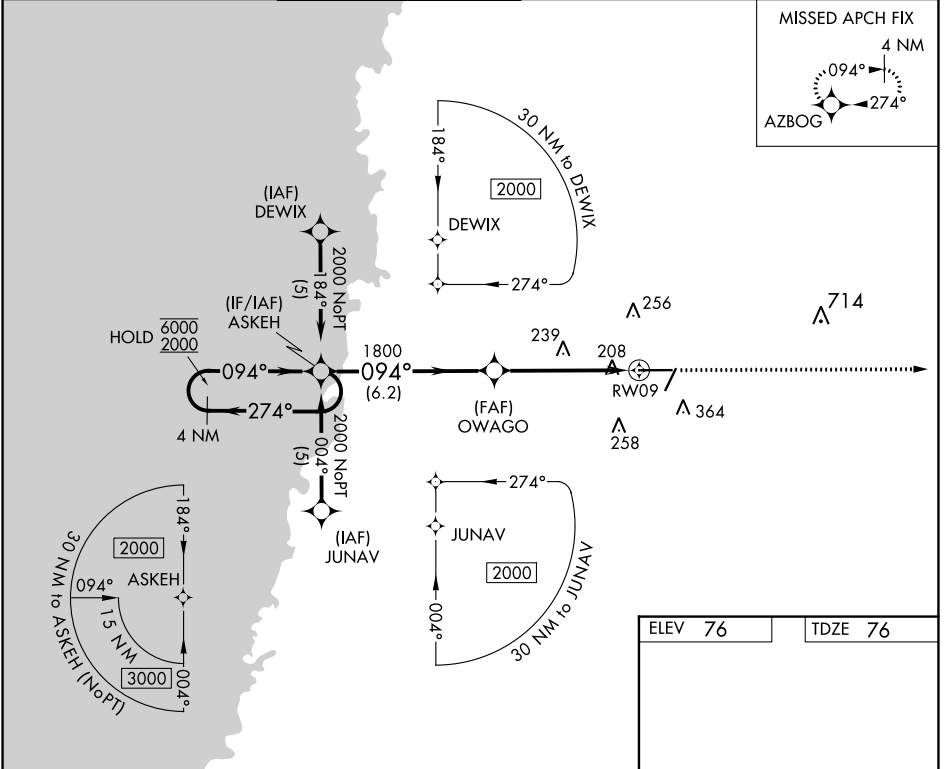
APP CRS	Rwy Idg	<b>7001</b>
<b>094°</b>	TDZE	<b>76</b>
	Apt Elev	<b>76</b>

# RNAV (GPS) RWY 9

BROOKSVILLE-TAMPA BAY RGNL (BKV)

RNP APCH.		MALSR	MISSED APPROACH: Climb to 2000 direct AZBOG and hold.
<p><b>▼</b> For uncompensated Baro-VNAV systems, LNAV/VNAV NA below -15°C or above 48°C.  <b>▲</b> For inop ALS increase LNAV Cat D visibility to 1¼ SM.</p>			

ASOS <b>134.725</b>	TAMPA APP CON <b>125.3 316.05</b>	BROOKSVILLE TOWER ★ <b>118.55 (CTAF) 0</b>	GND CON <b>121.4</b>	CLNC DEL <b>119.125</b> (When twr closed)	UNICOM <b>123.0</b>
------------------------	--------------------------------------	---	-------------------------	---	------------------------



CATEGORY	A	B	C	D
LNAV/VNAV DA	507-1 431 (500-1)			
LNAV MDA	500-¾	424 (500-¾)	500-1 424 (500-1)	

MIRL Rwy 3-21 and 9-27

SE-3, 26 DEC 2024 to 23 JAN 2025

SE-3, 26 DEC 2024 to 23 JAN 2025