

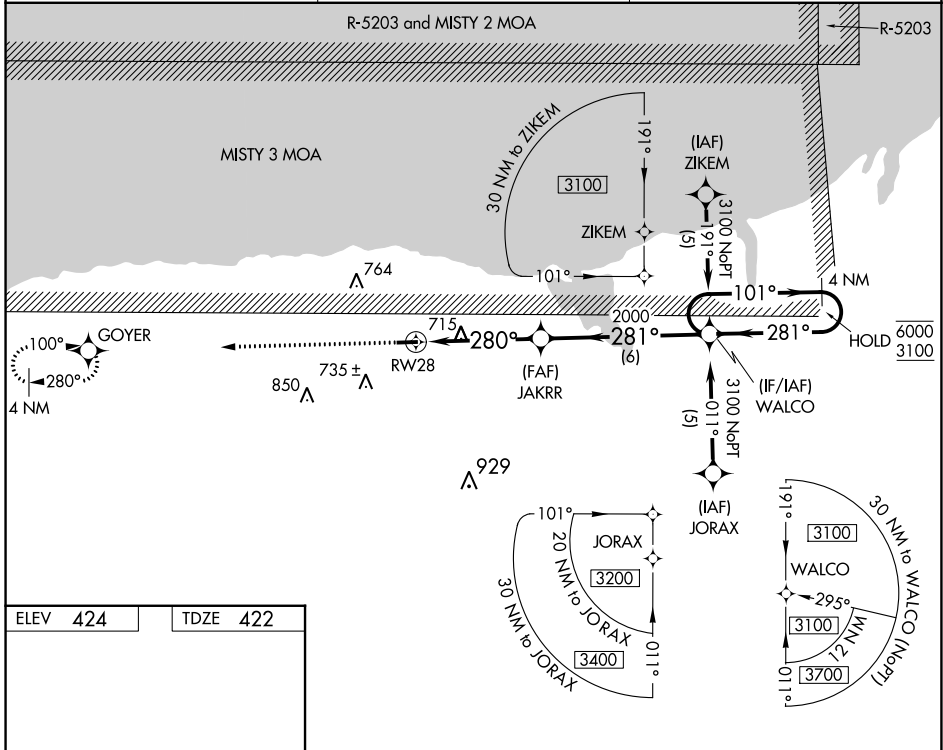
APP CRS	Rwy Idg	3803
280°	TDZE	422
	Apt Elev	424

RNAV (GPS) RWY 28

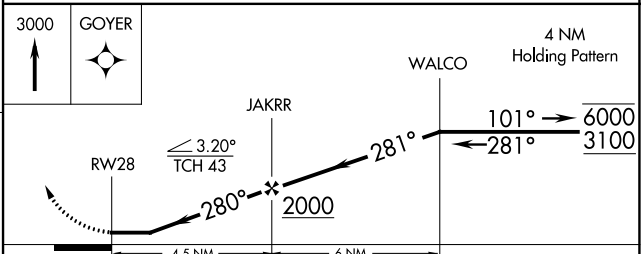
WILLIAMSON/SODUS (SDC)

RNP APCH - GPS.		MISSED APPROACH: Climb to 3000 direct GOYER and hold.
<p>Procedure NA at night. Rwy 28 helicopter visibility reduction below 1 SM NA. When local altimeter setting not received, use Rochester altimeter setting and increase all MDAs 80 feet and LNAV visibility Cat C 1/8 SM, and Circling visibility Cat C 1/4 SM.</p>		

AWOS-3 124.2	ROCHESTER APP CON 119.55 269.6	UNICOM 122.8 (CTAF)
------------------------	--	-------------------------------



ELEV 424	TDZE 422
<p>MIRL Rwy 10-28</p> <p>REIL Rws 10 and 28</p>	



CATEGORY	A	B	C	D
LNAV MDA	980-1	558 (600-1)	980-1 5/8 558 (600-1 5/8)	NA
C CIRCLING	1000-1 576 (600-1)	1020-1 596 (600-1)	1120-2 696 (700-2)	NA

NE-2, 26 DEC 2024 to 23 JAN 2025

NE-2, 26 DEC 2024 to 23 JAN 2025