

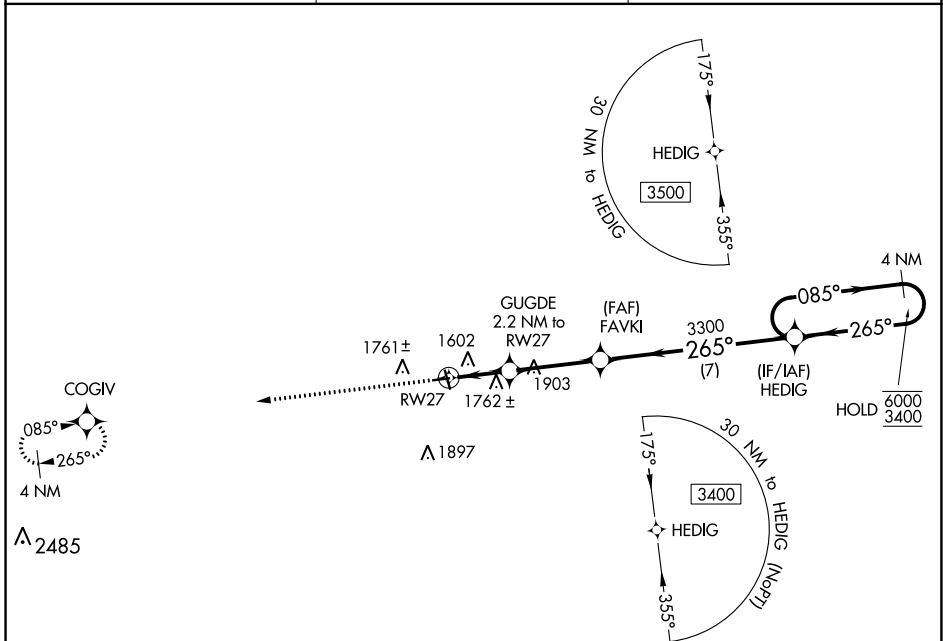
WAAS CH <b>45629</b> <b>W27A</b>	APP CRS <b>265°</b>	Rwy Idg <b>3400</b> TDZE <b>1523</b> Apt Elev <b>1523</b>
--	------------------------	---

# RNAV (GPS) RWY 27

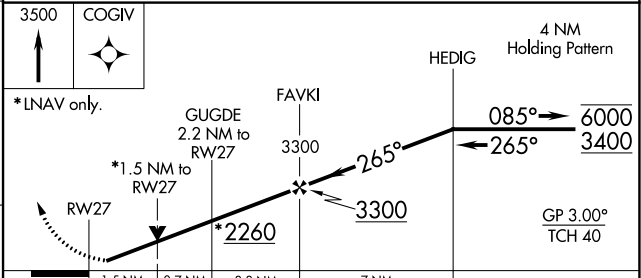
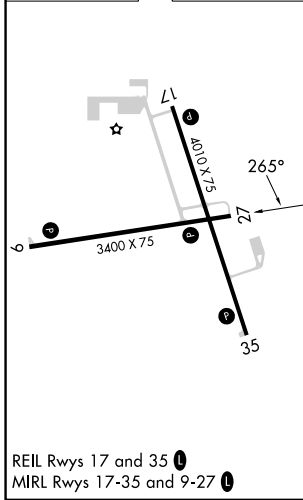
LANGLADE COUNTY (AIG)

RNP APCH.	MISSED APPROACH: Climb to 3500 direct COGIV and hold.
<p><b>▼</b> Rwy 27 helicopter visibility reduction below ¼ SM NA.  <b>▲</b> For uncompensated Baro-VNAV systems, LNAV/VNAV NA below -18°C or above 54°C.</p>	

AWOS-3 <b>119.075</b>	MINNEAPOLIS CENTER <b>124.4 317.7</b>	UNICOM <b>122.8 (CTAF) 0</b>
--------------------------	--	---------------------------------



ELEV 1523	TDZE 1523
-----------	-----------



CATEGORY	A	B	C	D
LPV DA		1773-1	250 (300-1)	
LNAV/VNAV DA		1792-1	269 (300-1)	
LNAV MDA	2020-1	497 (500-1)	2020-1 3/8	497 (500-1 3/8)
<b>C</b> CIRCLING	2120-1	597 (600-1)	2260-2 737 (800-2)	2260-2 1/4 737 (800-2 1/4)

REIL Rws 17 and 35  
MIRL Rws 17-35 and 9-27

45°09'N-89°07'W

# LANGLADE COUNTY (AIG)

## RNAV (GPS) RWY 27

EC-3, 26 DEC 2024 to 23 JAN 2025

EC-3, 26 DEC 2024 to 23 JAN 2025