

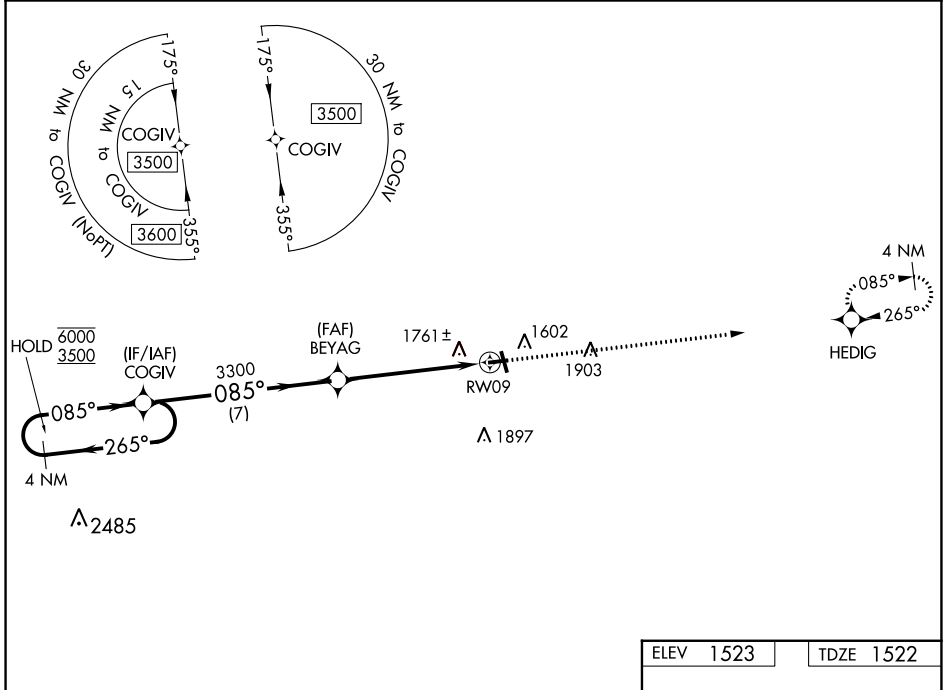
WAAS CH 82130 W09A	APP CRS 085°	Rwy Idg 3400 TDZE 1522 Apt Elev 1523
--	------------------------	---

RNAV (GPS) RWY 9

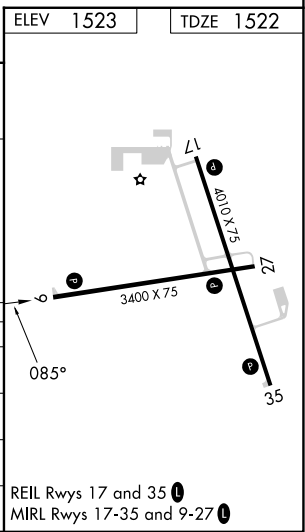
LANGLADE COUNTY (AIG)

RNP APCH.	MISSED APPROACH: Climb to 3400 direct HEDIG and hold.
⚠ Rwy 9 helicopter visibility reduction below 3/4 SM NA. ⚠ For uncompensated Baro-VNAV systems, LNAV/VNAV NA below -18C or above 54°C.	

AWOS-3 119.075	MINNEAPOLIS CENTER 124.4 317.7	UNICOM 122.8 (CTAF) 0
--------------------------	--	---------------------------------



4 NM Holding Pattern		3400 HEDIG	
COGIV		*LNAV only.	
6000 ← 265°	← 085°	085° →	→ 085°
3500			
GP 3.00°			
TCH 40			
	7 NM	3.9 NM	1.6 NM
			*1.6 NM to RWY9
			RWY9
CATEGORY	A	B	C
LPV DA	1772-1		250 (300-1)
LNAV/VNAV DA	2135-2 1/4		613 (700-2 1/4)
LNAV MDA	2080-1	558 (600-1)	2080-1 5/8 558 (600-1 5/8)
C CIRCLING	2120-1	597 (600-1)	2260-2 737 (800-2) 2260-2 1/4 737 (800-2 1/4)



EC-3, 26 DEC 2024 to 23 JAN 2025

EC-3, 26 DEC 2024 to 23 JAN 2025