

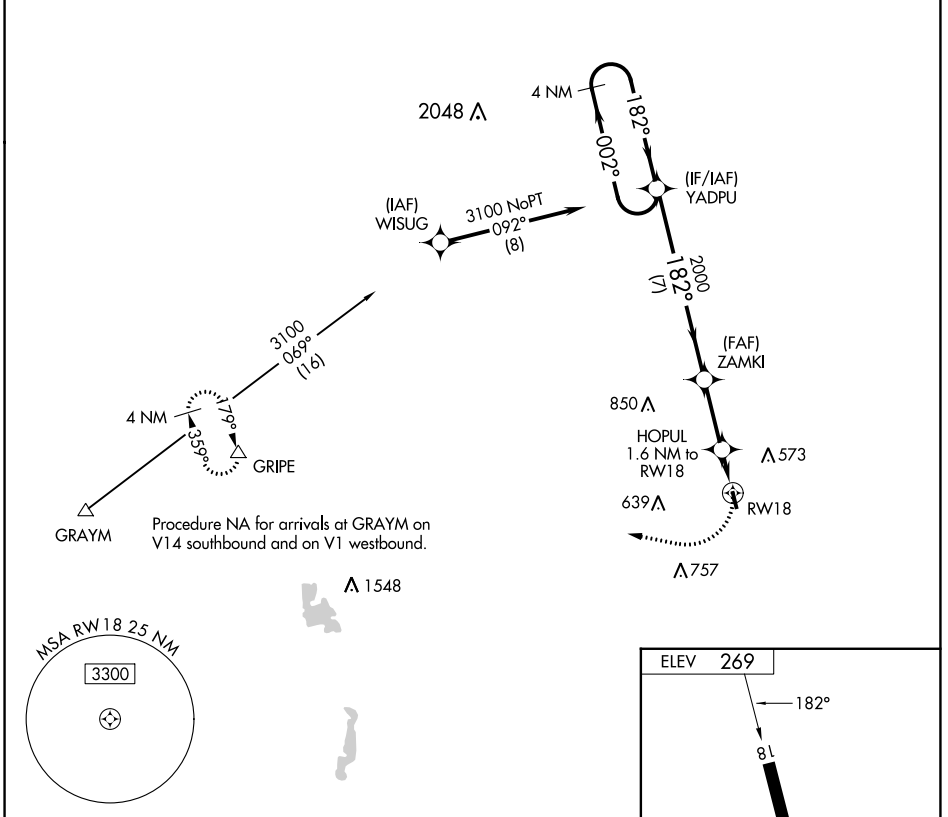
APP CRS	Rwy Idg	<b>3172</b>
<b>182°</b>	TDZE	<b>N/A</b>
	Apt Elev	<b>269</b>

# RNAV (GPS)-A

HOPEDALE INDUSTRIAL PARK (1B6)

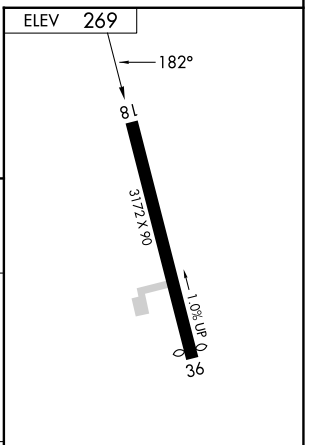
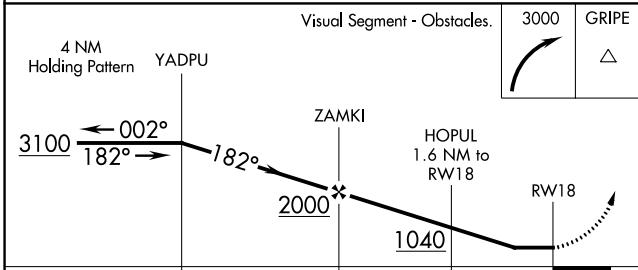
RNP APCH.	Use Pawtucket altimeter setting; when not received, procedure NA. Procedure NA at night. Rwy 18 helicopter visibility reduction below 1 SM NA.	MISSED APPROACH: Climbing right turn to 3000 direct GRIPE and hold.
-----------	---	---

SFZ AWOS-3 <b>120.775</b>	YANKEE APP CON <b>119.0</b>	UNICOM <b>122.8 (CTAF)</b>
------------------------------	--------------------------------	-------------------------------



NE-1, 26 DEC 2024 to 23 JAN 2025

NE-1, 26 DEC 2024 to 23 JAN 2025



CATEGORY	A	B	C	D
CIRCLING	880-1 611 (700-1)	980-1 711 (800-1)	1100-2½ 831 (900-2½)	NA

ELEV	269
HEADING	182°
HEADING	3172 x 90
HEADING	36