

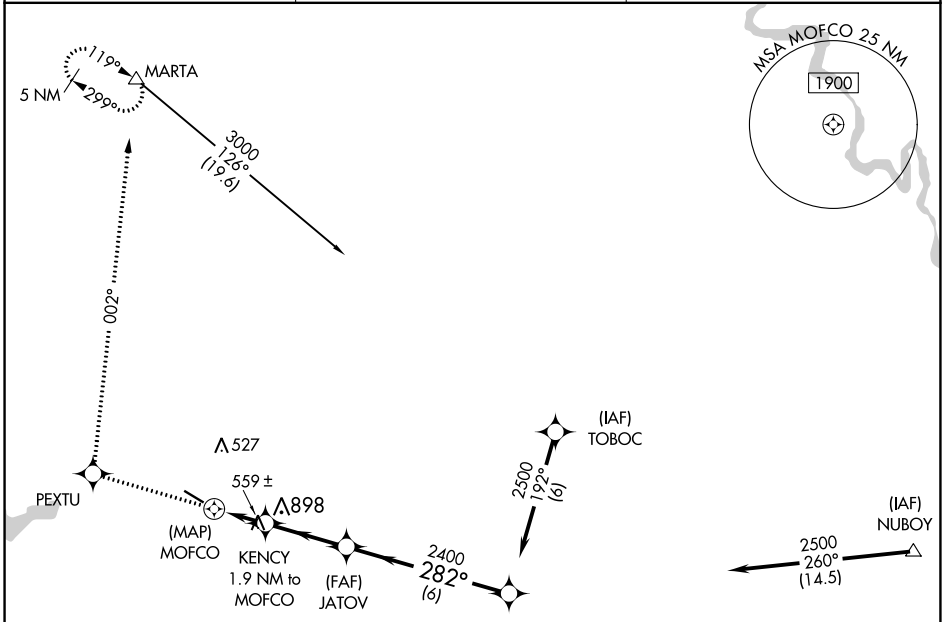
APP CRS	Rwy Idg 4402
282°	TDZE 311
	Apt Elev 319

RNAV (GPS) RWY 30

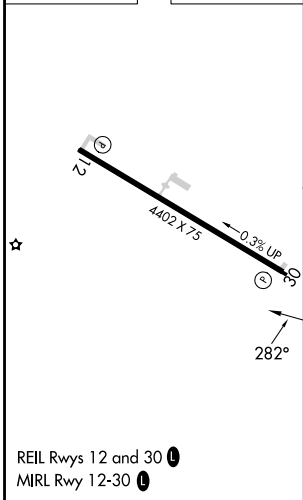
HART (3R4)

RNP APCH.	MISSED APPROACH: Climb to 4500 direct PEXTU and right turn via track 002° to MARTA and hold, continue climb in hold to 4500.
<p>▼ Rwy 30 helicopter visibility reduction below 3/4 SM NA.</p> <p>▲ NA Use Fort Polk altimeter setting; when not received, use Natchitoches altimeter setting and increase all MDA 20 feet.</p>	

POLK APP CON 123.7 261.3	GCO 135.075	UNICOM 122.8 (CTAF) 1
------------------------------------	-----------------------	--



ELEV 319	TDZE 311
-----------------	-----------------



4500	PEXTU	MARTA	VGSI and descent angles not coincident (VGSI Angle 3.50/TCH 56).
		tr 002°	
	KENCY 1.9 NM to MOFCO	JATOV	OXIDE
	MOFCO	2400	2500
		3.57° TCH 50	Procedure Turn NA
	0.5	1.9 NM	3 NM
			6 NM
CATEGORY	A	B	C
LNAV MDA	900-1	589 (600-1)	900-1 3/4 589 (600-1 3/4)
			NA

SC-4, 26 DEC 2024 to 23 JAN 2025

SC-4, 26 DEC 2024 to 23 JAN 2025