

WAAS CH <b>87040</b> <b>W14A</b>	APP CRS <b>140°</b>	Rwy ldg TDZE <b>66</b> Apt Elev <b>67</b>
--	------------------------	---

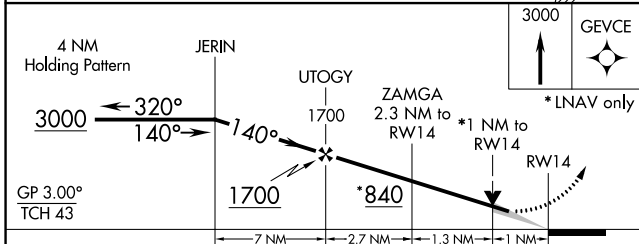
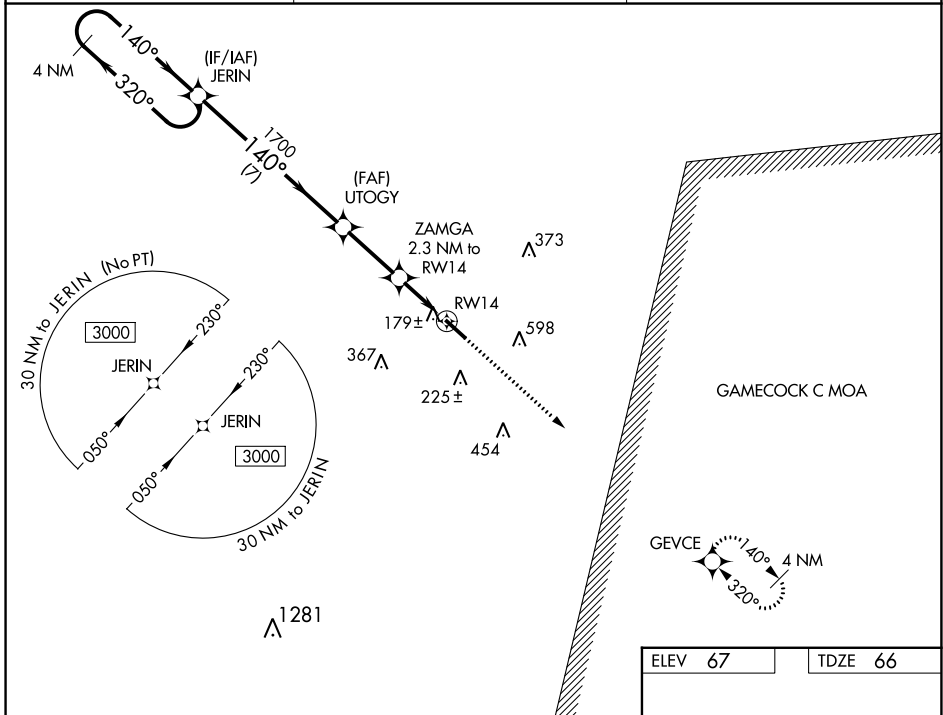
# RNAV (GPS) RWY 14

WILLIAMSBURG RGNL (CKI)

**⚠** For uncompensated Baro-VNAV systems, LNAV/VNAV NA below -15°C (5°F) or above 54°C (130°F). Baro-VNAV and VDP NA when using Florence Rgnl altimeter setting.  
DME/DME RNP-0.3 NA.

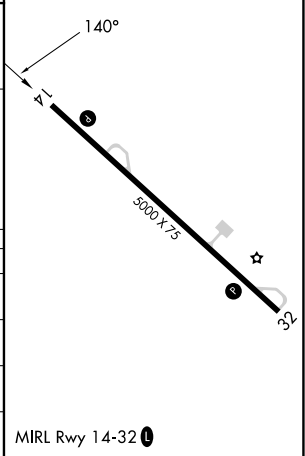
MISSED APPROACH: Climb to 3000 direct GEVCE and hold.

AWOS-3 <b>124.775</b>	MYRTLE BEACH APP CON * <b>127.4 257.95</b>	UNICOM <b>122.7 (CTAF) 0</b>
--------------------------	---	---------------------------------



ELEV 67	TDZE 66
---------	---------

CATEGORY	A	B	C	D
LPV DA	334-1 268 (300-1)	334-7/8	268 (300-7/8)	
LNAV/VNAV DA		454-1 1/4	388 (400-1 1/4)	
LNAV MDA		440-1	374 (400-1)	
<b>C</b> CIRCLING	480-1 413 (500-1)	580-1 513 (600-1)	960-2 3/4 893 (900-2 3/4)	960-3 893 (900-3)



SE-2, 26 DEC 2024 to 23 JAN 2025

SE-2, 26 DEC 2024 to 23 JAN 2025