

WAAS CH 58332	APP CRS 186°	Rwy Idg TDZE 522	5002
W19A		Apt Elev 522	

RNAV (GPS) RWY 19

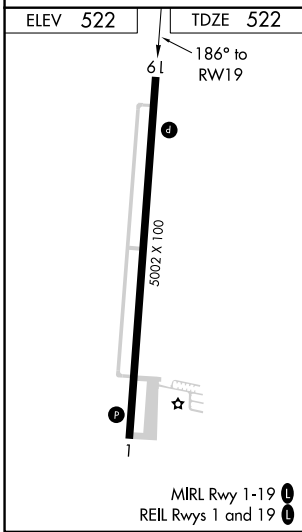
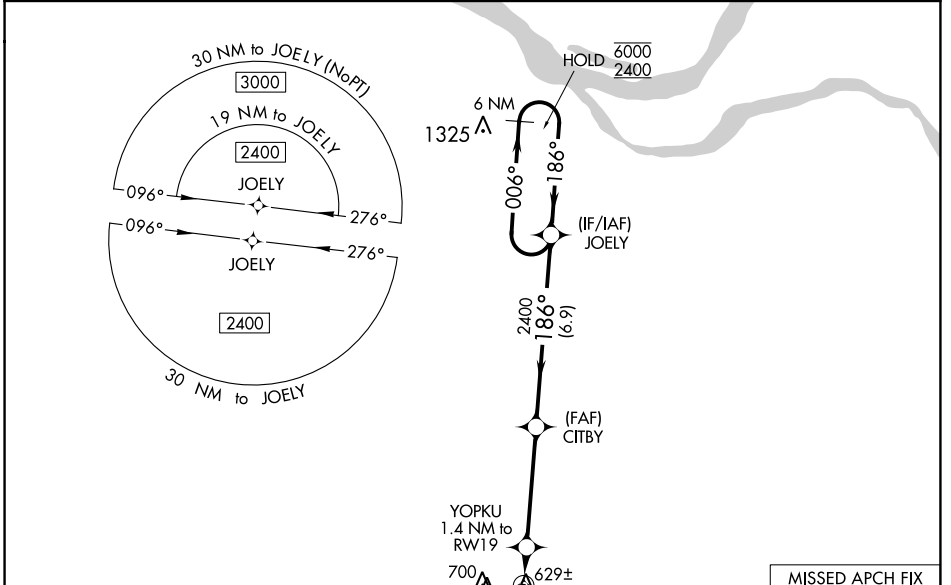
MAYFIELD GRAVES COUNTY (M25)

RNP APCH - GPS.

⚠ Circling Rwy 19 NA at night. Rwy 19 helicopter visibility reduction below 3/4 SM NA. Baro-VNAV NA when using Paducah altimeter setting. For uncompensated Baro-VNAV systems, LNAV/VNAV NA below -16°C or above 54°C. When local altimeter setting not received, use Paducah altimeter setting: increase LPV DA to 833 feet, LNAV/VNAV DA to 977 feet and all visibilities 1/4 SM; increase all MDAs 80 feet and visibility Cats C and D 1/4 SM.

⚠ MISSED APPROACH: Climb to 2300 direct LUXON and hold.

AWOS-3 120.625	MEMPHIS CENTER 133.65 292.15	UNICOM 122.8 (CTAF) 0
--------------------------	--	---------------------------------



ELEV 522	TDZE 522	MISSED APCH FIX LUXON 006° 186° 6 NM	
2300	LUXON	VGSi and RNAV glidepath not coincident (VGSi Angle 3.00/TCH 35).	
YOPKU 1.4 NM to RW19	CITBY 2400	JOELY	6 NM Holding Pattern
RW19	1020	2400	006° → 6000 ← 186° 2400 GP 3.00° TCH 56
1.4 NM	4.3 NM	6.9 NM	
CATEGORY	A	B	C
LPV DA	772-1 250 (300-1)		
LNAV/VNAV DA	916-1½ 394 (400-1½)		
LNAV MDA	880-1 358 (400-1)		
<input checked="" type="checkbox"/> CIRCLING	1060-1 538 (600-1)	1060-1½ 538 (600-1½)	1280-2½ 758 (800-2½)

SE-1, 26 DEC 2024 to 23 JAN 2025

SE-1, 26 DEC 2024 to 23 JAN 2025