

ULYSSES, KANSAS

AL-6226 (FAA)

23334

WAAS CH 99539 W12A	APP CRS 124°	Rwy ldg TDZE Apt Elev	4600 3071 3071
--	------------------------	-----------------------------	---

RNAV (GPS) RWY 12

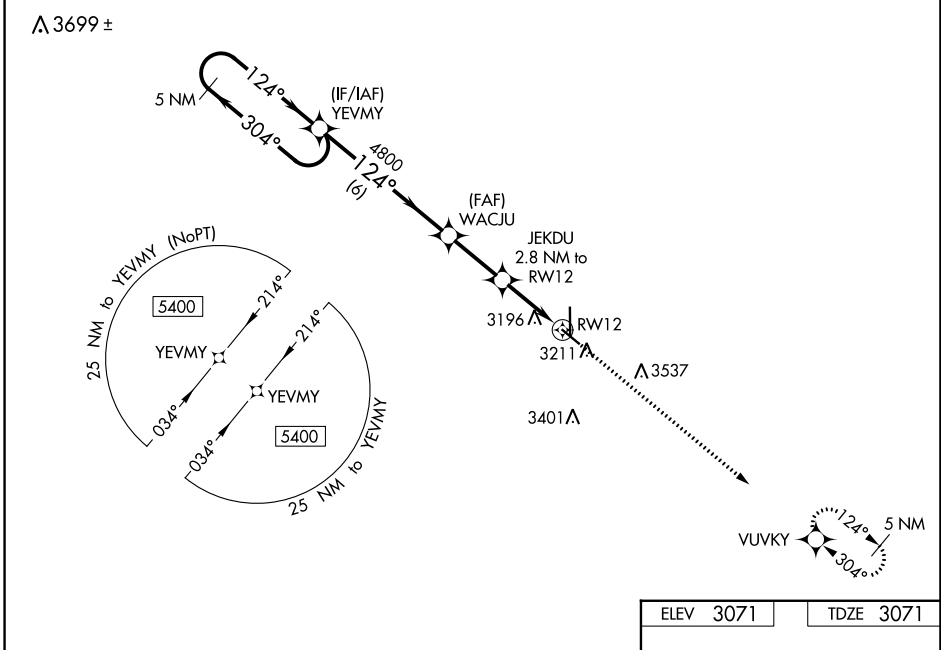
ULYSSES (ULS)

RNP APCH - GPS.

⚠ For uncompensated Baro-VNAV systems, LNAV/VNAV NA below -21°C or above 54°C.
⚠ When local altimeter setting not received, use Garden City altimeter setting: increase LPV DA to 3431 feet, LNAV/VNAV DA to 3563 feet and visibility 1/8 SM; increase all MDAs 120 Feet and visibility Cat C 1/4 SM. Baro-VNAV and VDP NA when using Garden City altimeter setting.

MISSED APPROACH:
Climb to 5400 direct VUVKY and hold.

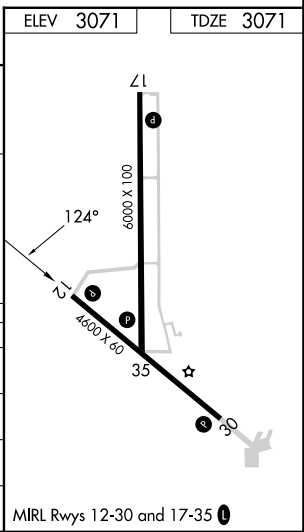
AWOS-3PT 118.95	KANSAS CITY CENTER 125.2 285.425	UNICOM 122.8 (CTAF) 0
---------------------------	--	---------------------------------



NC-2, 26 DEC 2024 to 23 JAN 2025

NC-2, 26 DEC 2024 to 23 JAN 2025

5400 ← 304°		YEVMY		WACJU		JEKDU		RWY 12	
5400		4800		4800		4000		3401	
GP 3.00°		TCH 40		6 NM		2.5 NM		1.7 NM	
5400		4800		4000		3401		3211	
CATEGORY	A	B	C	D					
LPV DA	3321-1		250 (300-1)		NA				
LNAV/VNAV DA	3453-1 1/4		382 (400-1 1/4)		NA				
LNAV MDA	3460-1		389 (400-1)		3460-1 1/8		389 (400-1 1/8)		
C CIRCLING	3740-1		669 (700-1)		3900-2 1/2		829 (900-2 1/2)		



ULYSSES, KANSAS
Amdt 2A 06OCT22

37°36'N-101°22'W

ULYSSES (ULS) RNAV (GPS) RWY 12

MIRL Rwy 12-30 and 17-35 0