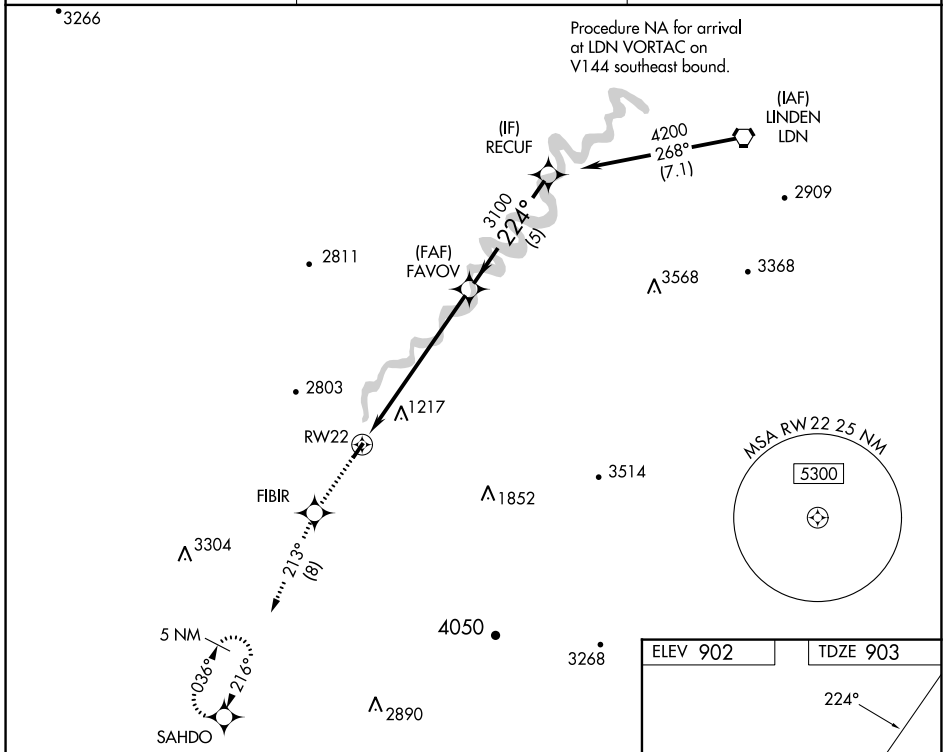


| | | |
|--|------------------------|---|
| WAAS CH 77627 W22A | APP CRS 224° | Rwy Idg 3126 TDZE 903 Apt Elev 902 |
|--|------------------------|---|

RNAV (GPS) RWY 22

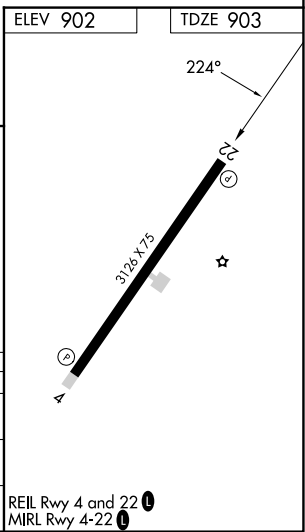
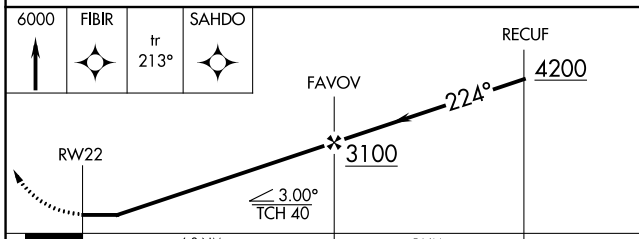
LURAY CAVERNS (LUA)

| | | |
|---|--|---|
| <p>▼ DME/DME RNP-0.3 NA. Helicopter visibility reduction below $\frac{3}{4}$ SM NA. When local altimeter setting not received, use Staunton/Waynesboro/Harrisonburg altimeter setting and increase all MDA 120 feet; increase LNAV Cat B and Circling Cat B visibility $\frac{1}{4}$ mile.</p> | <p>▲ MISSED APPROACH: Climb to 6000 direct FIBIR and on track 213° to SAHDO and hold, continue climb-in-hold to 6000.</p> | |
| <p>AWOS-3 118.275</p> | <p>WASHINGTON CENTER 133.2 282.2</p> | <p>UNICOM 122.8 (CTAF) 0</p> |



NE-3, 26 DEC 2024 to 23 JAN 2025

NE-3, 26 DEC 2024 to 23 JAN 2025



| CATEGORY | A | B | C | D |
|----------|----------------------|-----------------------------|----|----|
| LP MDA | 1460-1 | 557 (600-1) | NA | NA |
| LNAV MDA | 1820-1 $\frac{1}{4}$ | 917 (1000-1 $\frac{1}{4}$) | NA | NA |
| CIRCLING | 1820-1 $\frac{1}{4}$ | 918 (1000-1 $\frac{1}{4}$) | NA | NA |