

LURAY, VIRGINIA

AL-6229 (FAA)

24081

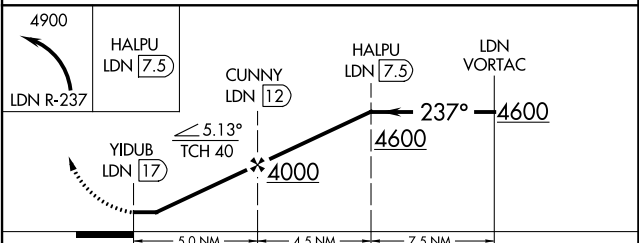
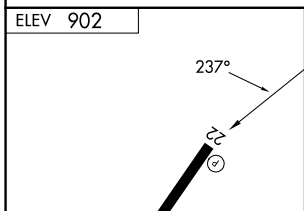
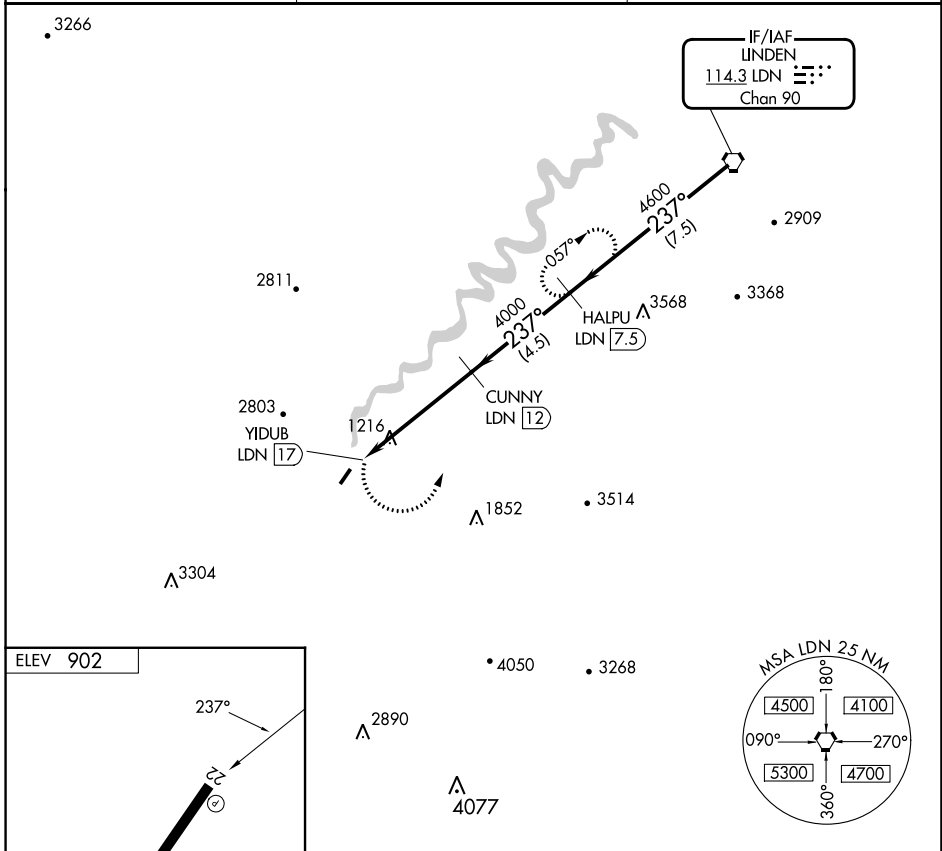
VORTAC LDN 114.3 Chan 90	APP CRS 237°	Rwy Idg TDZE Apt Elev N/A N/A 902
--	------------------------	---

VOR/DME-B

LURAY CAVERNS (LUA)

<p>⚠ Visibility reduction by helicopters NA. When local altimeter setting not received, use Staunton/Waynesboro/Harrisburg altimeter setting and increase all MDA 120 feet.</p>	<p>MISSED APPROACH: Climbing left turn to 4900 on LDN VORTAC R-237 to HALPU/LDN 7.5 DME and hold, continue climb-in-hold to 4900.</p>
--	--

AWOS-3 118.275	WASHINGTON CENTER 133.2 282.2	UNICOM 122.8 (CTAF) 0
--------------------------	---	--



REIL Rwy 4 and 22 0 MIRL Rwy 4-22 0	CATEGORY		A	B	C	D
	CIRCLING		2200-1¼ 1298 (1300-1¼)	2200-1½ 1298 (1300-1½)	NA	NA

LURAY, VIRGINIA
Amdt 3B 25MAR21

38°40'N-78°30'W

LURAY CAVERNS (LUA)
VOR/DME-B

NE-3, 26 DEC 2024 to 23 JAN 2025

NE-3, 26 DEC 2024 to 23 JAN 2025