

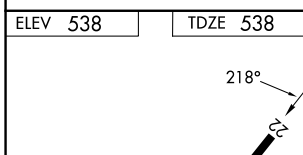
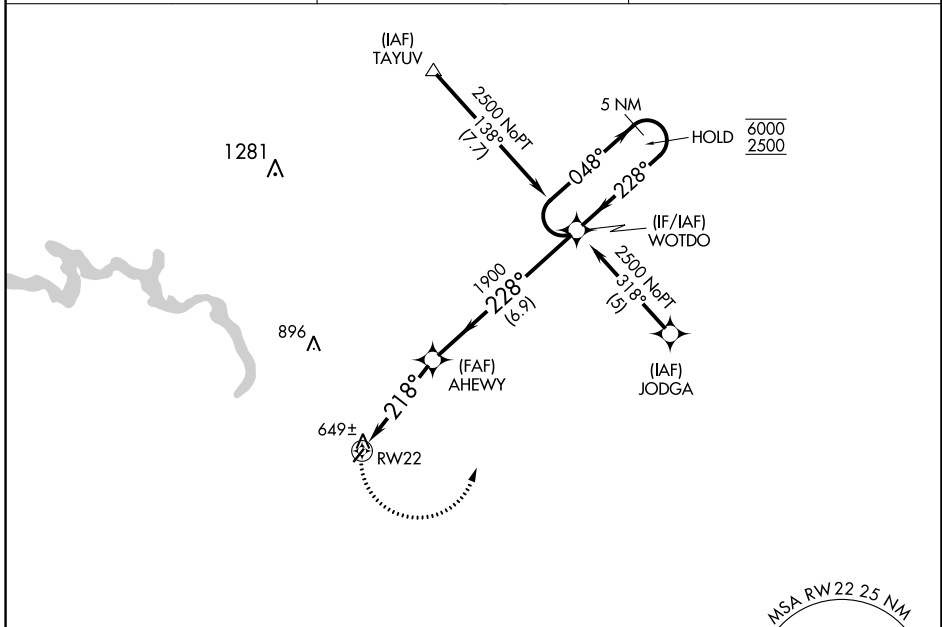
APP CRS	Rwy Idg	<b>2812</b>
<b>218°</b>	TDZE	<b>538</b>
	Apt Elev	<b>538</b>

# RNAV (GPS) RWY 22

MALVERN MUNI (M78)

RNP APCH - GPS.	<p>▼ Rwy 22 helicopter visibility reduction below 1 SM NA. Use Hot Springs altimeter setting; when not received use Bill and Hillary Clinton Nil/Adams Fld altimeter setting and increase all MDAs 80 feet. Procedure NA at night.</p> <p>▲ NA</p>	MISSED APPROACH: Climbing left turn to 2500 direct WOTDO and hold.
-----------------	--	--

HOT ASOS <b>119.925</b>	MEMPHIS CENTER <b>128.475 377.15</b>	UNICOM <b>122.8(CTAF) 0</b>
----------------------------	---	--------------------------------



ELEV 538	TDZE 538	Visual Segment - Obstacles.		5 NM Holding Pattern	
RW22		AHEWY		WOTDO	
4.1 NM		6.9 NM		048° → 6000	
218°		228°		← 228° 2500	
CATEGORY	A	B	C	D	
LNAV MDA	960-1	422 (500-1)	NA		
CIRCLING	1000-1 462 (500-1)	1080-1 542 (600-1)	NA		

SC-1, 26 DEC 2024 to 23 JAN 2025

SC-1, 26 DEC 2024 to 23 JAN 2025