

WAAS CH 93936 W16A	APP CRS 160°	Rwy Idg TDZE Apt Elev	5000 1257 1266
--	------------------------	-----------------------------	---

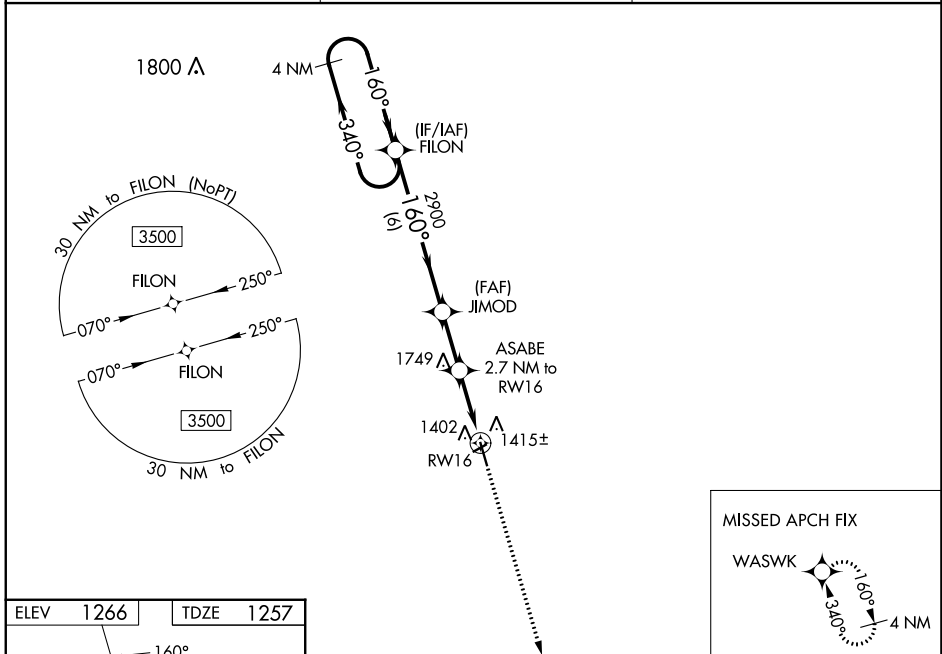
RNAV (GPS) RWY 16

GWINNER/ROGER MELROE FLD (GWR)

⚠ For uncompensated Baro-VNAV systems, LNAV/VNAV NA below -17°C (2°F) or above 47°C (117°F). DME/DME RNP-0.3 NA. Circling NA to Rwy's 6 and 24. Baro-VNAV and VDP NA when using Fargo altimeter setting. When local altimeter setting not received, use Fargo altimeter setting: increase LPV DA to 1683 feet and visibility 3/8 SM, and LNAV/VNAV DA to 1803 feet and visibility 5/8 SM; increase all MDAs 180 feet and visibility LNAV Cat C/D 5/8 SM, and Circling Cat C 3/4 SM, and Circling Cat D 1/2 SM.

MISSED APPROACH:
Climb to 3500 direct WASWK and hold.

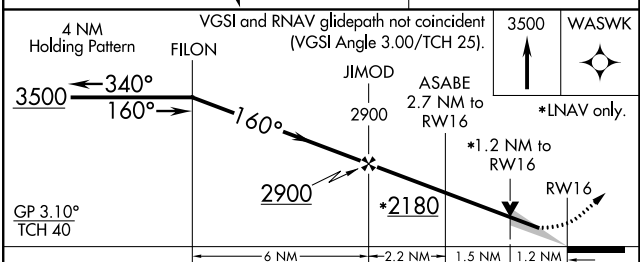
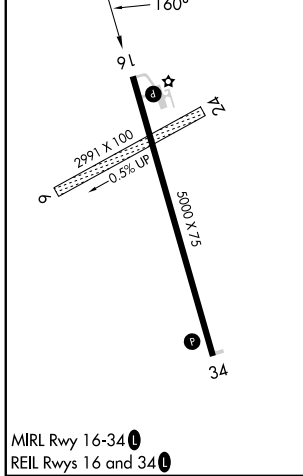
AWOS-3 118.325	MINNEAPOLIS CENTER 127.35 278.3	UNICOM 122.7 (CTAF) 0
--------------------------	---	---------------------------------



NC-1, 26 DEC 2024 to 23 JAN 2025

NC-1, 26 DEC 2024 to 23 JAN 2025

ELEV 1266	TDZE 1257
-----------	-----------



CATEGORY	A	B	C	D
LPV DA	1507-1		250 (300-1)	
LNAV/VNAV DA	1627-1¼		370 (400-1¼)	
LNAV MDA	1660-1 403 (400-1)		1660-1½ 403 (400-1½)	
☑ CIRCLING	1780-1 514 (600-1)		1840-1½ 2060-2½ 574 (600-1½) 794 (800-2½)	