

| | | | |
|--|------------------------|-----------------------------|---|
| WAAS CH 99317 W34A | APP CRS 340° | Rwy Idg TDZE Apt Elev | 5000 1257 1266 |
|--|------------------------|-----------------------------|---|

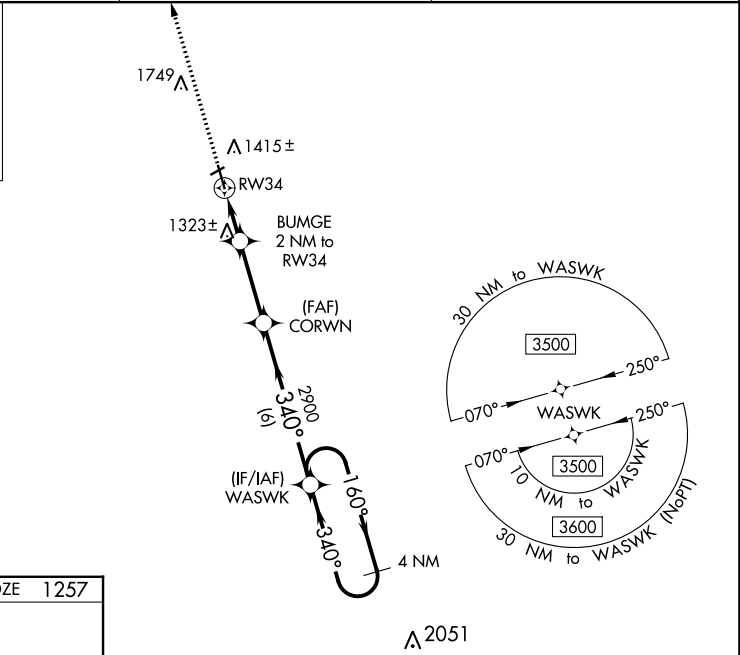
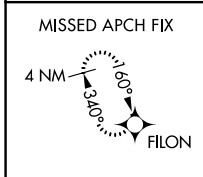
RNAV (GPS) RWY 34

GWINNER/ROGER MELROE FLD (GWR)

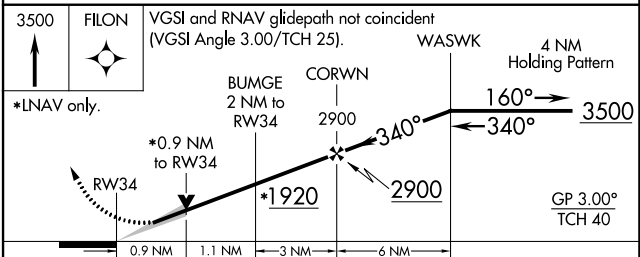
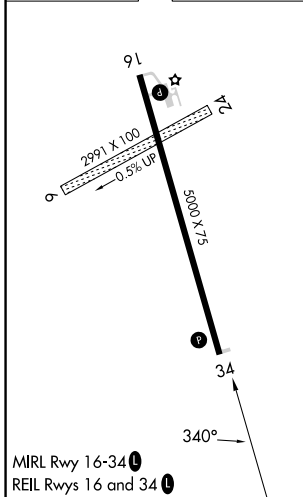
⚠ Circling NA to Rws 6 and 24. For uncompensated Baro-VNAV systems, LNAV/VNAV NA below -17°C (2°F) or above 54°C (130°F). DME/DME RNP-0.3 NA. When local altimeter setting not received use Fargo altimeter setting; increase all DA to 1683 feet and all visibilities ½ SM; increase all MDAs 180 feet and visibility LNAV Cat C/D ½ SM, and Circling Cat C ¾ SM, and Circling Cat D ½ SM. Baro-VNAV and VDP NA when using Fargo altimeter setting.

MISSED APPROACH:
Climb to 3500 direct
FILON and hold.

| | | |
|--------------------------|---|--------------------------------|
| AWOS-3 118.325 | MINNEAPOLIS CENTER 127.35 278.3 | UNICOM 122.7(CTAF) 0 |
|--------------------------|---|--------------------------------|



| | |
|-----------|-----------|
| ELEV 1266 | TDZE 1257 |
|-----------|-----------|



| CATEGORY | A | B | C | D |
|-------------------|--------|-------------|-------------------------|-------------------------|
| LPV DA | | 1507-1 | 250 (300-1) | |
| LNAV/ VNAV DA | | 1507-1 | 250 (300-1) | |
| LNAV MDA | | 1580-1 | 323 (400-1) | |
| C CIRCLING | 1780-1 | 514 (600-1) | 1840-1½ 574 (600-1½) | 2060-2½ 794 (800-2½) |