

WAAS CH 81808 W18A	APP CRS 181°	Rwy Idg TDZE Apt Elev	6101 1414 1421
--	------------------------	-----------------------------	---

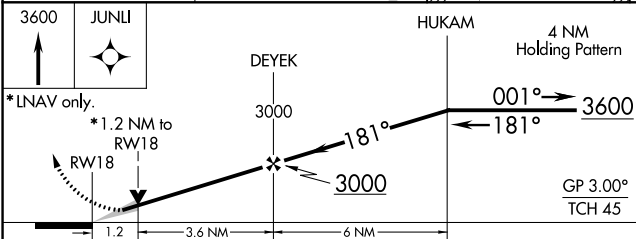
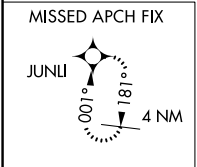
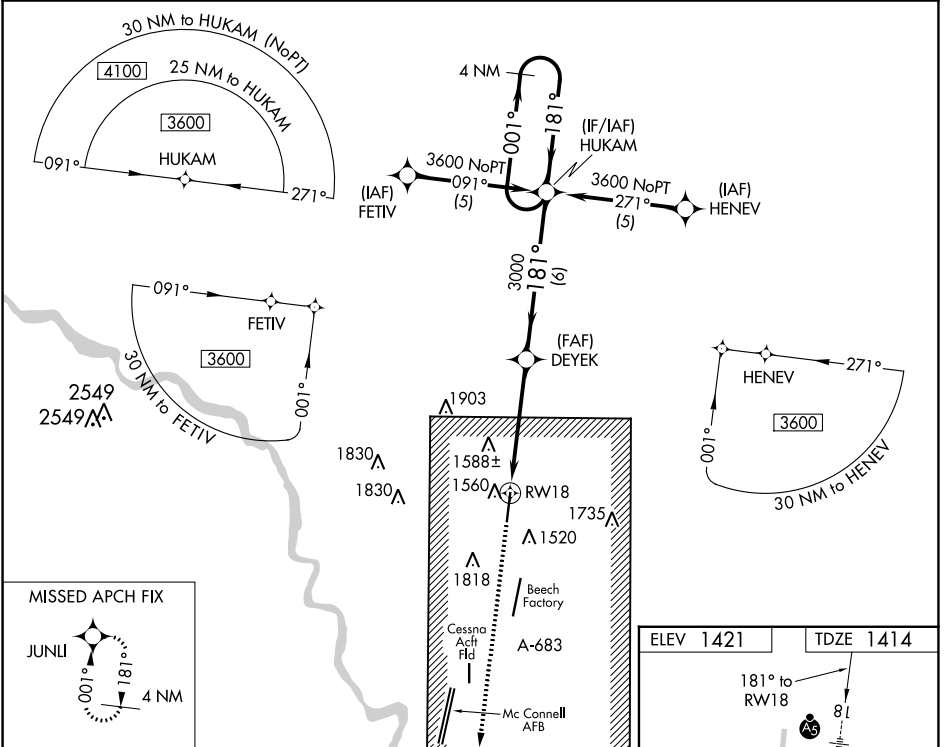
RNAV (GPS) RWY 18

COLONEL JAMES JABARA (A.A.O)

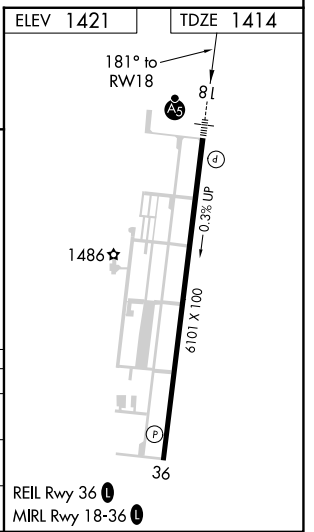
⚠ For inoperative MALSR, increase LPV all Cats visibility to 1 mile and LNAV Cat D visibility to 1 1/4. DME/DME RNP-0.3 NA. When local altimeter setting not received, use Wichita Dwight D Eisenhower Nhl altimeter setting: increase LPV DA to 1720; increase all MDAs 40 feet and Circling Cat D visibility 1/4 SM.

MALSR
MISSED APPROACH: Climb to 3600 direct JUNLI and hold.

ASOS 134.025	WICHITA APP CON 134.8 269.1	CLNC DEL 125.0	UNICOM 122.7 (CTAF)
------------------------	---------------------------------------	--------------------------	-------------------------------



CATEGORY	A	B	C	D
LPV DA	1680-1/2 266 (300-1/2)			
LNAV MDA	1820-1/2	406 (400-1/2)	1820-3/4 406 (400-3/4)	1820-1 406 (400-1)
CIRCLING	1880-1 459 (500-1)	1940-1 519 (600-1)	2120-2 699 (700-2)	2220-2 1/2 799 (800-2 1/2)



NC-2, 26 DEC 2024 to 23 JAN 2025

NC-2, 26 DEC 2024 to 23 JAN 2025