

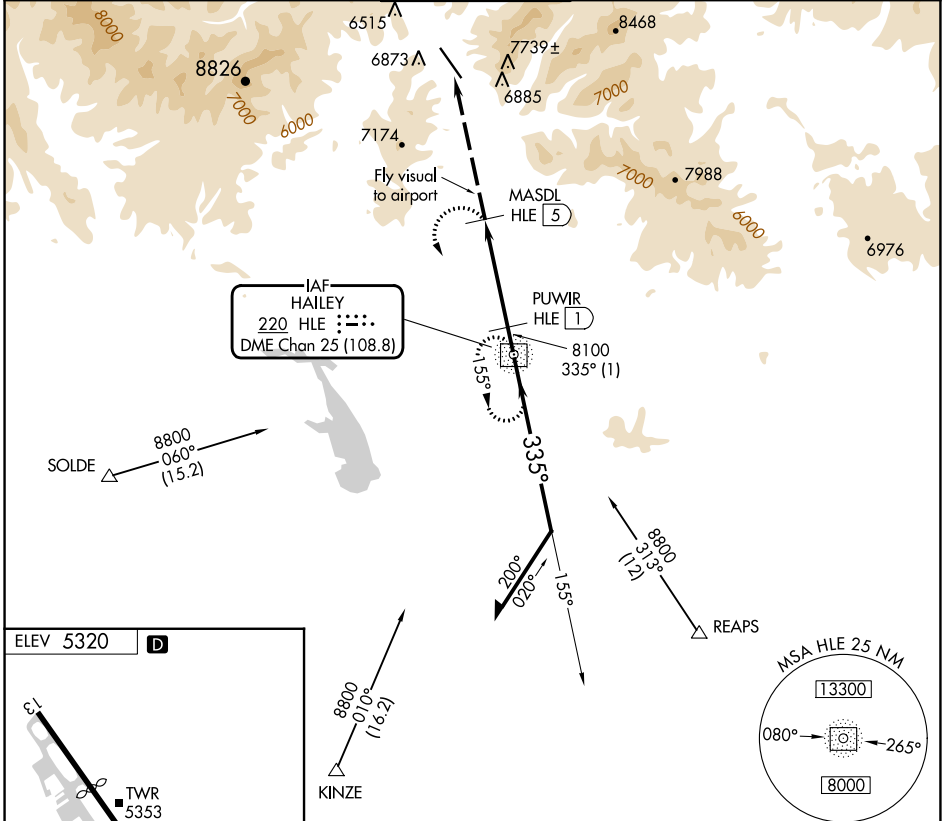
NDB/DME HLE <b>220</b>	APP CRS <b>335°</b>	Rwy Idg TDZE Apt Elev <b>N/A</b> <b>5320</b>
Chan <b>25 (108.8)</b>		

# NDB/DME-A FRIEDMAN MEML (SUN)

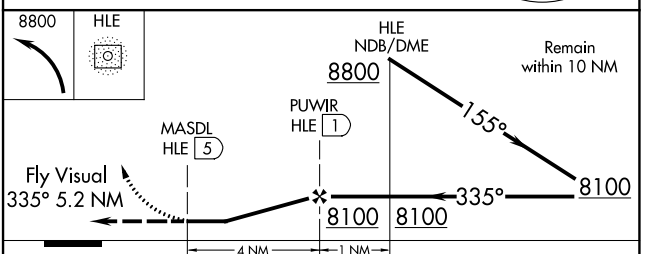
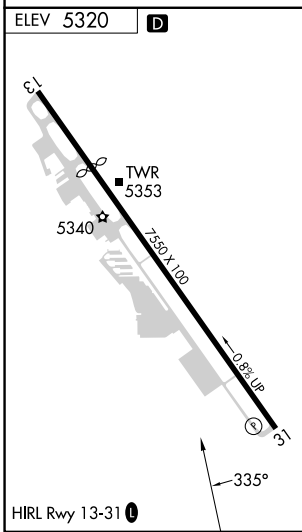
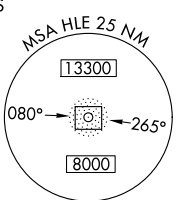
**NA** Circling NA NE of Rwy 13-31. Visibility reduction by helicopters NA. When contact tower closed, procedure not authorized. Occasional ADF needle swings away from the final approach course are to be expected north of missed approach point. Procedure NA at night.

**MISSED APPROACH:** Climbing left turn to 8800 direct HLE NDB and hold.

ATIS <b>128.225</b>	SALT LAKE CENTER <b>118.05 353.0</b>	<b>HAILEY TOWER*</b> <b>125.6 (CTAF)</b>	GND CON <b>121.7</b>	UNICOM <b>122.95</b>
------------------------	---	---	-------------------------	-------------------------



IAF HAILEY  
220 HLE  
DME Chan 25 (108.8)



CATEGORY	A	B	C	D
<b>CIRCLING</b>	8040-5	2720 (2800-5)		NA

NW-1, 26 DEC 2024 to 23 JAN 2025

NW-1, 26 DEC 2024 to 23 JAN 2025