

WAAS CH 93707 W13A	APP CRS 130°	Rwy Idg 5000 TDZE 2503 Apt Elev 2503
--	------------------------	---

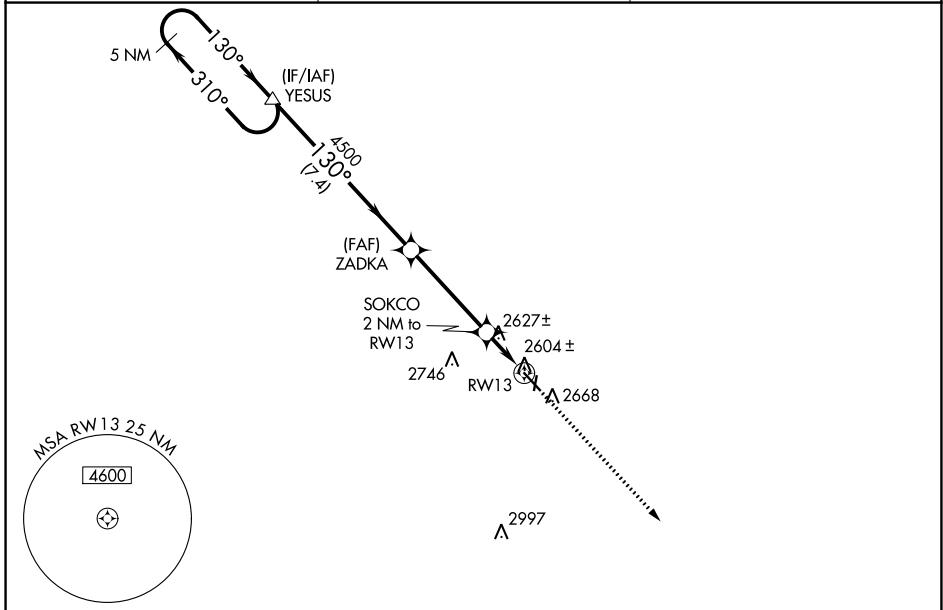
RNAV (GPS) RWY 13

COZAD MUNI (CZD)

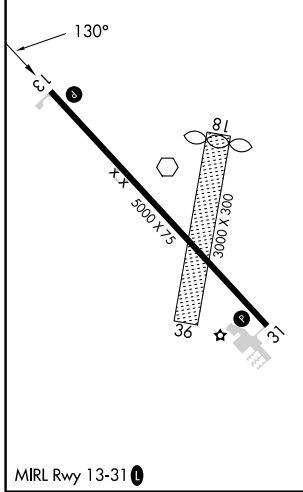
NA Circling NA to Rwy 18 and 36. Baro-VNAV NA. DME/DME RNP-0.3 NA.
 Use Lexington altimeter setting; when not received, use North Platte altimeter setting and increase all DAs 79 feet and LPV and LNAV/VNAV visibility ¼ mile all Cats, increase all MDAs 80 feet and Circling Cat C visibility ¼ mile. Helicopter visibility reduction below ¾ SM NA.

MISSED APPROACH: Climb to 5500 direct TOKKU and hold.

LXN AWOS-3 121.025	DENVER CENTER 132.7 226.675	UNICOM 122.8 (CTAF) 0
------------------------------	---------------------------------------	---------------------------------



ELEV 2503	TDZE 2503
------------------	------------------



5 NM Holding Pattern		YESUS	5500 TOKKU	
5000	← 310°	→ 130°	ZADKA	SOKCO 2 NM to RW13
GP 3.00°	TCH 52	4500	*3180	RW13
		7.4 NM	4 NM	2 NM
CATEGORY	A	B	C	D
LPV DA	2875-1¼ 372 (400-1¼)		NA	
LNAV/VNAV DA	2913-1½ 410 (500-1½)		NA	
LNAV MDA	2920-1	417 (500-1)	2920-1¼ 417 (500-1¼)	NA
CIRCLING	3080-1	577 (600-1)	3140-1¾ 637 (700-1¾)	NA

* LNAV only.

NC-2, 26 DEC 2024 to 23 JAN 2025

NC-2, 26 DEC 2024 to 23 JAN 2025