

WAAS CH 63125 W21A	APP CRS 207°	Rwy Idg TDZE Apt Elev	5500 35 36
--	------------------------	-----------------------------	---------------------------------------

RNAV (GPS) RWY 21

PLYMOUTH MUNI (PMZ)

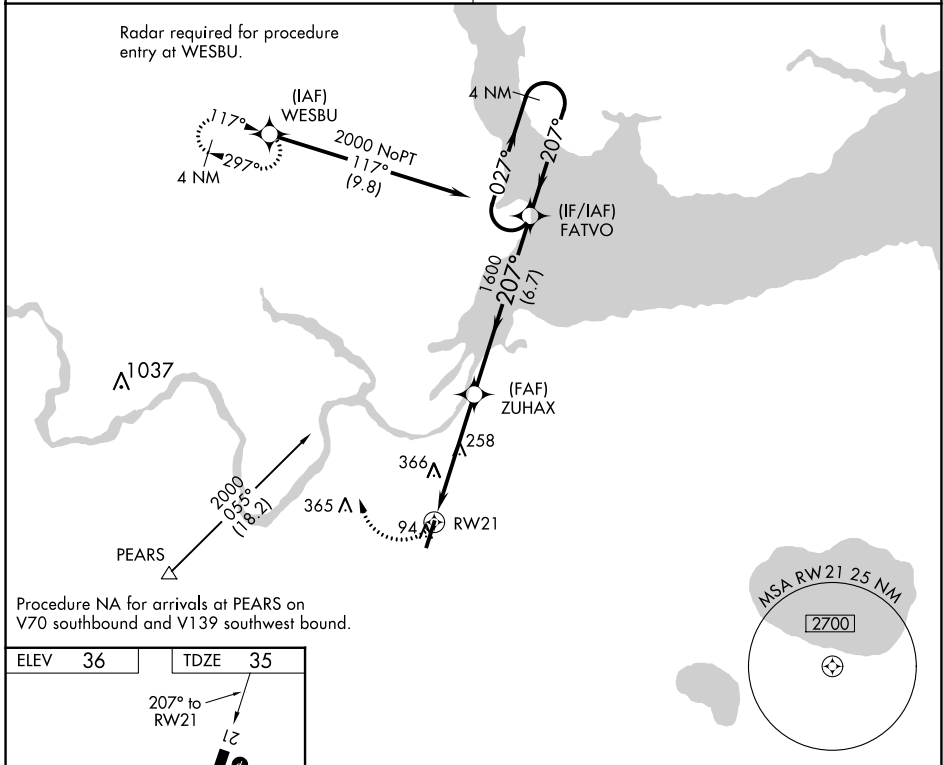
NA Use Northeastern Rgnl altimeter setting; when not received, use Coastal Carolina Rgnl altimeter setting and increase all MDA 80 feet; increase all Cat C visibilities ¼ SM. When VGSI inop, procedure NA at night. DME/DME RNP-0.3 NA.

MISSED APPROACH: Climbing right turn to 2000 direct WESBU and hold.

CHERRY POINT APP CON
119.35 377.175

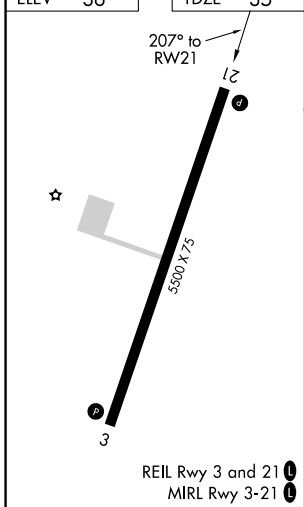
UNICOM
122.8 (CTAF)

Radar required for procedure entry at WESBU.

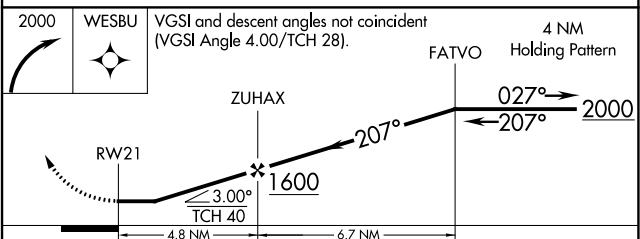


Procedure NA for arrivals at PEARIS on V70 southbound and V139 southwest bound.

ELEV 36	TDZE 35
---------	---------



REIL Rwy 3 and 21
MIRL Rwy 3-21



CATEGORY	A	B	C	D
LP MDA	600-1	565 (600-1)	600-1½ 565 (600-1½)	NA
LNAV MDA	660-1	625 (700-1)	660-1¾ 625 (700-1¾)	NA
CIRCLING	660-1 624 (700-1)	720-1 684 (700-1)	720-2 684 (700-2)	NA

SE-2, 26 DEC 2024 to 23 JAN 2025

SE-2, 26 DEC 2024 to 23 JAN 2025