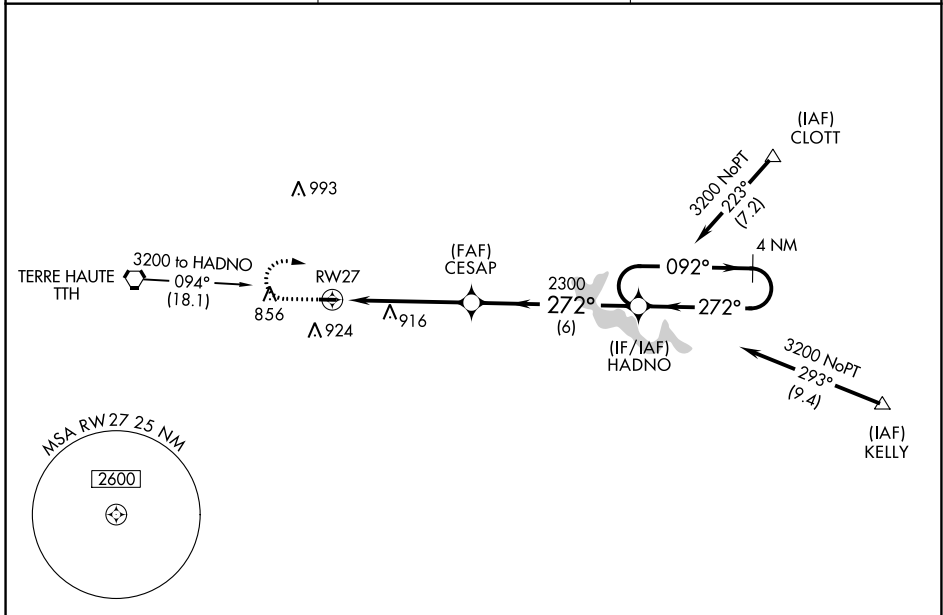


APP CRS 272°	Rwy Idg TDZE Apt Elev	2499 645 645
------------------------	-----------------------------	---

RNAV (GPS) RWY 27

BRAZIL CLAY COUNTY (ØI2)

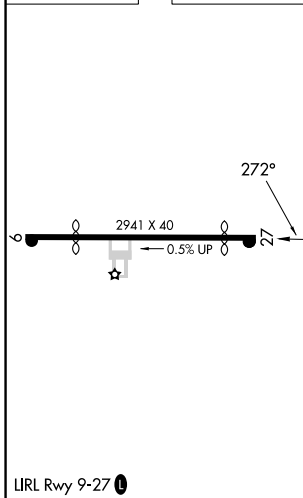
RNP APCH - GPS.		MISSED APPROACH: Climb to 2300 then dimbing right turn to 3200 direct HADNO and hold.	
▼ Use HUF altimeter setting. Procedure NA at night. ▲ NA Helicopter visibility reduction below 1 SM NA.		HUF ASOS 127.5	HULMAN APP CON 125.45 339.8
		UNICOM 122.8 (CTAF) 0	



EC-2, 26 DEC 2024 to 23 JAN 2025

EC-2, 26 DEC 2024 to 23 JAN 2025

ELEV 645	TDZE 645
----------	----------



▲I339			
3200	3200	HADNO	4 NM Holding Pattern
↑ 272° ↘ 272° ✦ CESAP		HADNO 092° → 3200 ← 272°	
RWY27 ↘ 272° ✦ 2300 ≤ 3.07° TCH 40		5 NM 6 NM	
CATEGORY	A	B	C D
LNAV MDA	1240-1 595 (600-1)	NA	
CIRCLING	1240-1 595 (600-1)	NA	