

SHERIDAN, INDIANA

AL-6252 (FAA)

23278

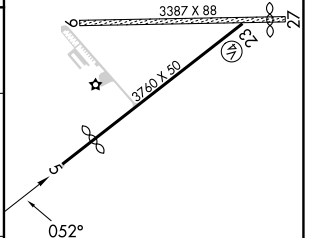
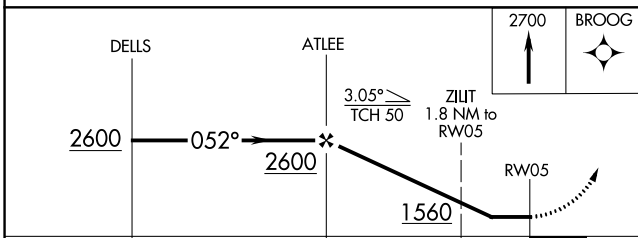
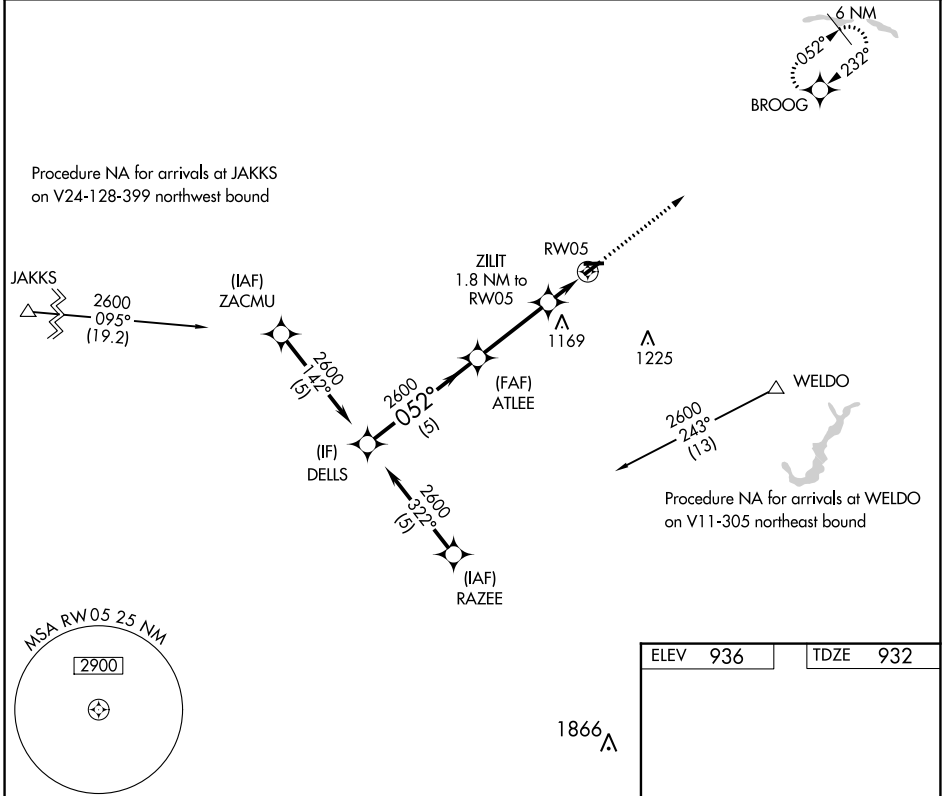
APP CRS	Rwy Idg	3110
052°	TDZE	932
	Apt Elev	936

RNAV (GPS) RWY 5

SHERIDAN (5I4)

RNP APCH.	<p>NA Circling NA to Rws 9 and 27. Procedure NA at night. Rwy 5 helicopter visibility reduction below 1 SM NA. Use Indianapolis Exec altimeter setting.</p>	<p>MISSED APPROACH: Climb to 2700 direct BROOG and hold.</p>

TYQ AWOS-3PT 120.725	INDIANAPOLIS APP CON 124.65 317.8	UNICOM 123.075 (CTAF) 0
--------------------------------	---	-----------------------------------



CATEGORY	A	B	C	D
LNNAV MDA	1400-1	468 (500-1)	1400-1 3/8 468 (500-1 3/8)	NA
C CIRCLING	1460-1 524 (600-1)	1480-1 544 (600-1)	1500-1 1/2 564 (600-1 1/2)	NA

ELEV 936	TDZE 932
LIRL Rwy 5-23 0	

SHERIDAN, INDIANA
Orig-C 08OCT20

40°11'N-86°13'W

RNAV (GPS) RWY 5

SHERIDAN (5I4)

EC-2, 26 DEC 2024 to 23 JAN 2025

EC-2, 26 DEC 2024 to 23 JAN 2025