

WAAS CH 61233 W29A	APP CRS 289°	Rwy Idg TDZE 1167 Apt Elev 1174	3500 1167 1174
--	------------------------	---	---

RNAV (GPS) RWY 29

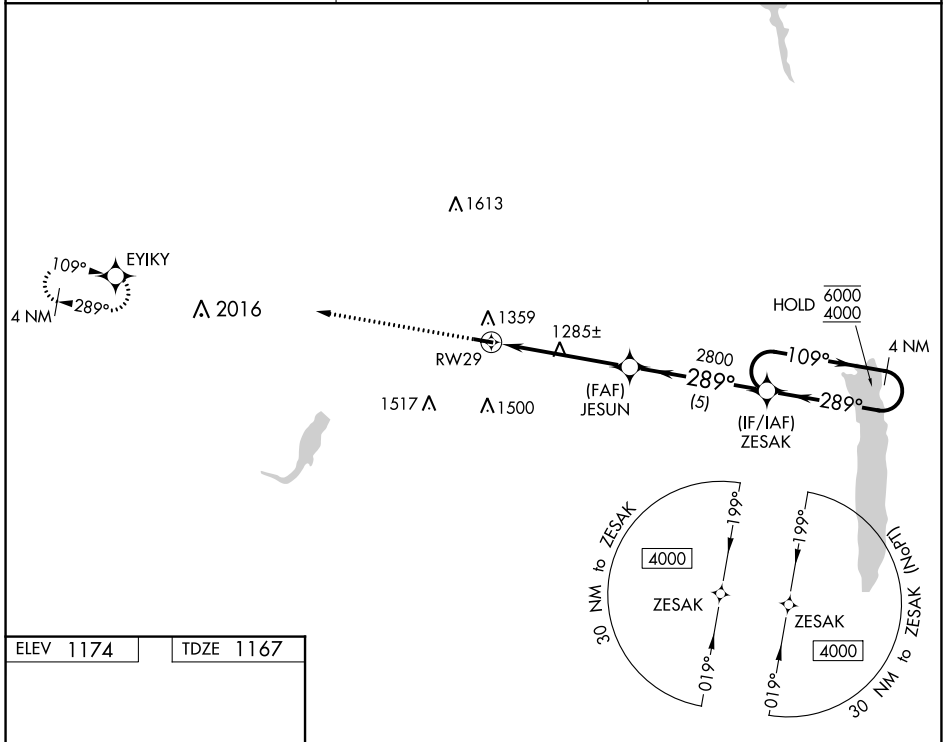
GEAUGA COUNTY (7G8)

RNP APCH - GPS.

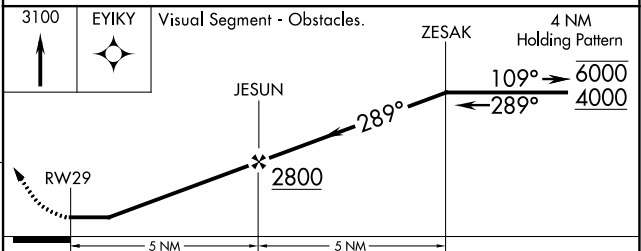
NA Circling Rwy 11 NA at night. Rwy 29 helicopter visibility reduction below 3/4 SM NA. Use Youngstown/Warren altimeter setting; when not received, use Cuyahoga County altimeter setting and increase all MDA's 40 feet and increase Circling Cat C visibility 1/4 SM.

MISSED APPROACH: Climb to 3100 direct EYIKY and hold.

YNG ASOS 123.75	CLEVELAND APP CON 125.35 346.325	UNICOM 123.0 (CTAF) 1
---------------------------	--	---------------------------------



ELEV 1174	TDZE 1167
REIL Rwy 11 and 29 1 MIRL Rwy 11-29 1	



CATEGORY	A	B	C	D
LP MDA	1620-1	453 (500-1)	1620-1 3/8 453 (500-1 3/8)	NA
LNAV MDA	1640-1	473 (500-1)	1640-1 3/8 473 (500-1 3/8)	NA
C CIRCLING	1760-1	586 (600-1)	1900-2 726 (800-2)	NA

EC-2, 26 DEC 2024 to 23 JAN 2025

EC-2, 26 DEC 2024 to 23 JAN 2025