

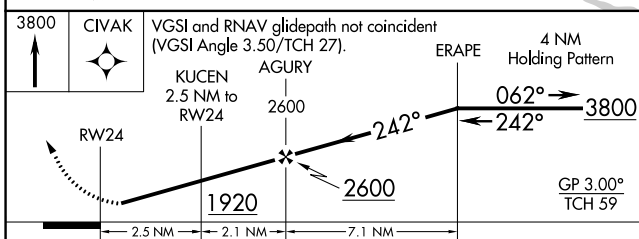
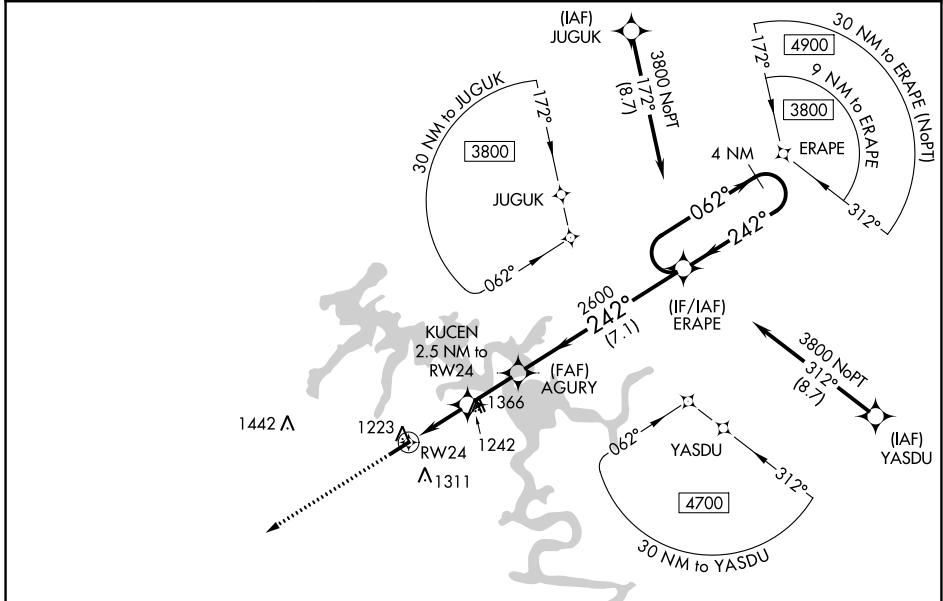
WAAS CH <b>93527</b> <b>W24A</b>	APP CRS <b>242°</b>	Rwy Idg TDZE <b>1084</b> Apt Elev <b>1084</b>
--	------------------------	---

# RNAV (GPS) RWY 24

SMITHVILLE MUNI (ØA.3)

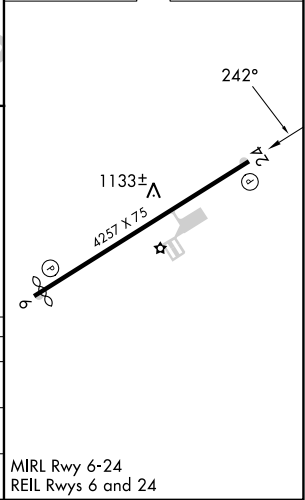
RNP APCH.	Baro-VNAV NA. Procedure NA at night. Rwy 24 helicopter visibility reduction below 1 SM NA. Use Sparta altimeter setting, when not received, use Tullahoma altimeter setting and increase LPV DA to 1455 feet; increase LNAV/VNAV DA to 1471 feet and all visibilities 1/8 SM, increase all MDA 60 feet and LNAV visibility Cat C 1/8 SM.	MISSED APPROACH: Climb to 3800 direct CIVAK and hold.
-----------	--	---

SRB AWOS-3 <b>128.25</b>	MEMPHIS CENTER <b>132.9 290.3</b>	UNICOM <b>122.8 (CTAF)</b>
-----------------------------	--------------------------------------	-------------------------------



ELEV 1084	TDZE 1084
-----------	-----------

CATEGORY	A	B	C	D
LPV DA	1402-1	318 (400-1)		NA
LNAV/VNAV DA	1418-1	334 (400-1)		NA
LNAV MDA	1520-1	436 (500-1)	1520-1¼ 436 (500-1¼)	NA



SE-1, 26 DEC 2024 to 23 JAN 2025

SE-1, 26 DEC 2024 to 23 JAN 2025