

VORTAC OKW 111.0 Chan 47	APP CRS 076°	Rwy Idg TDZE Apt Elev	6007 700 700
---------------------------------------	------------------------	-----------------------------	---

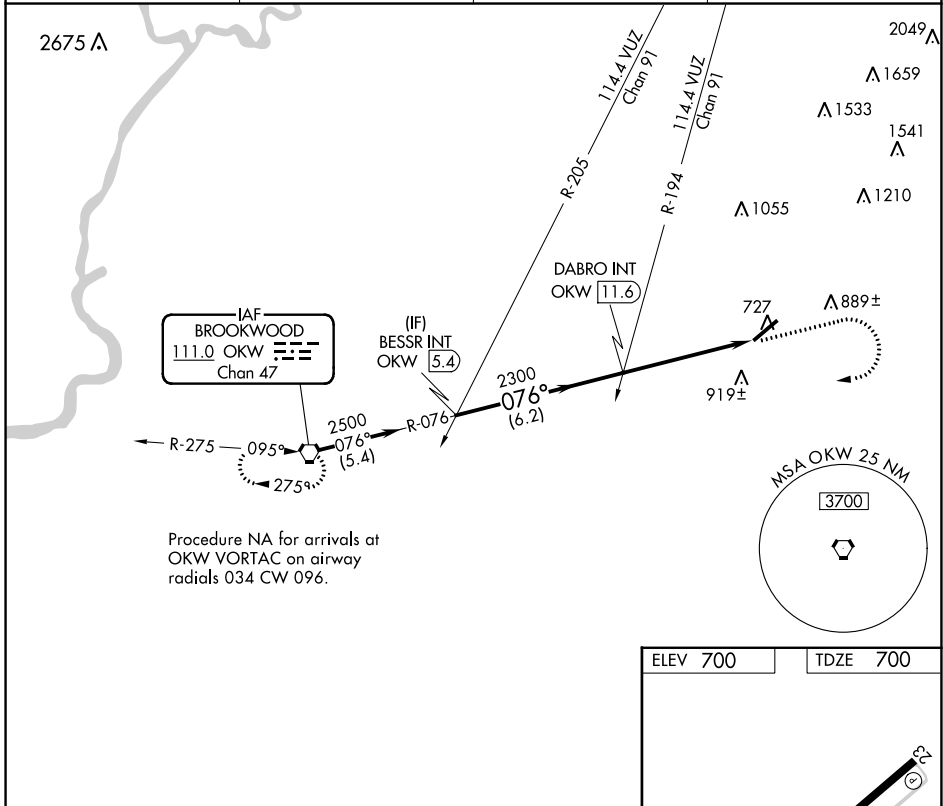
VOR RWY 5

BESSEMER (EKY)

NA Inoperative table does not apply. When local altimeter setting not received, use Alabaster altimeter setting and increase all MDAs 60 feet; increase S-5 Cat C visibility $\frac{1}{8}$ SM and Circling Cat D visibility $\frac{1}{4}$ SM.

MISSED APPROACH: Climb to 1500 then climbing right turn to 3000 direct OKW VORTAC and hold.

AWOS-3PT 118.825	BIRMINGHAM APP CON 124.9 351.85	CLNC DEL 123.75	UNICOM 123.0 (CTAF)
----------------------------	---	---------------------------	-------------------------------



SE-4, 26 DEC 2024 to 23 JAN 2025

SE-4, 26 DEC 2024 to 23 JAN 2025

Procedure Turn NA	BESSR INT OKW (5.4)	2500	076°	DABRO INT OKW (11.6)	2300	3.02° TCH 45	OKW (16.4)
	VGSI and descent angles not coincident (VGSI Angle 3.00/TCH 60).		6.2 NM	4.9 NM			
CATEGORY	A	B	C	D			
S-5	1180-1	480 (500-1)	1180-1 $\frac{3}{8}$ 480 (500-1 $\frac{3}{8}$)	1180-1 $\frac{1}{2}$ 480 (500-1 $\frac{1}{2}$)			
CIRCLING	1200-1	500 (500-1)	1220-1 $\frac{1}{2}$ 520 (600-1 $\frac{1}{2}$)	1320-2 620 (700-2)			

