

APP CRS	Rwy Idg	3002
087°	TDZE	146
	Apt Elev	146

RNAV (GPS) RWY 9

DAVID G JOYCE (ØR5)

RNP APCH - GPS.

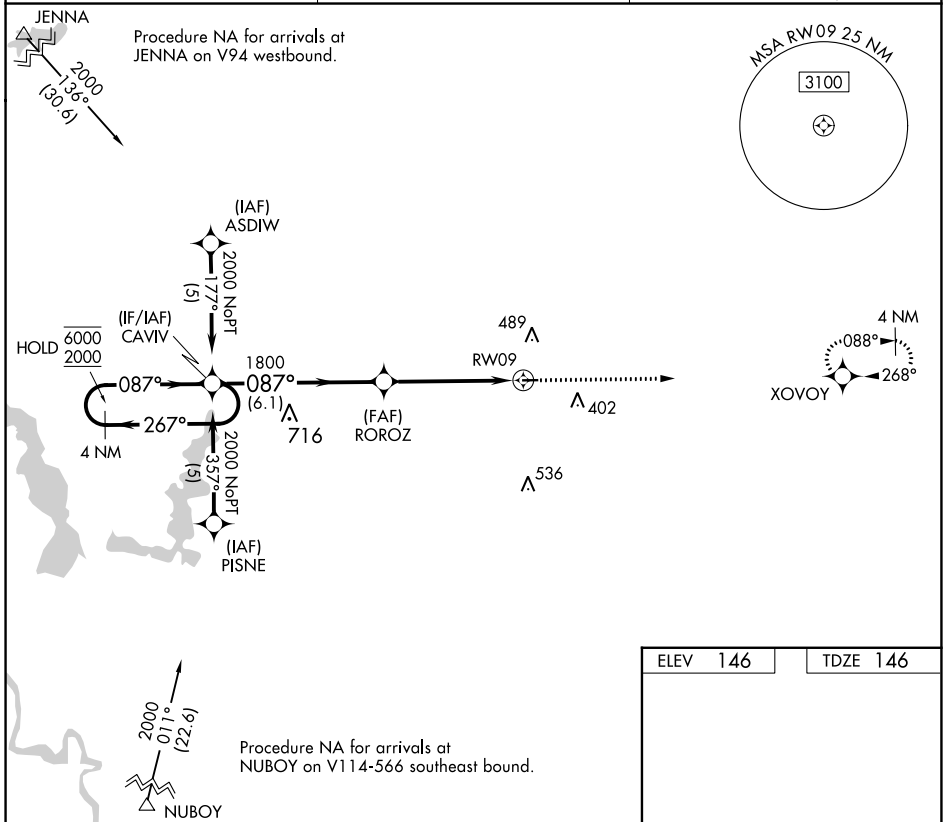
⚠ NA Procedure NA at night. Rwy 9 helicopter visibility reduction below 1 SM NA. Use Alexandria Intl altimeter setting, when not received use Esler Rgnl altimeter setting.

MISSED APPROACH: Climb to 2000 direct XVOVOY and hold.

AEX ASOS
123.975

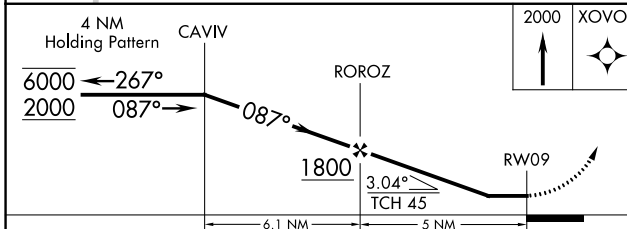
POLK APP CON
125.4 302.2

UNICOM
122.7 (CTAF) 0



SC-4, 26 DEC 2024 to 23 JAN 2025

SC-4, 26 DEC 2024 to 23 JAN 2025



ELEV	146	TDZE	146
------	-----	------	-----

3002 X 100
0.9% UP
087° to RWY 09

MIRL Rwy 9-27 0
REIL Rwy 9 and 27 0

CATEGORY	A	B	C	D
LNVA MDA	780-1	634 (700-1)		NA
CIRCLING	780-1 634 (700-1)	900-1 754 (800-1)		NA