

| | | |
|-------------|----------|-------------|
| APP CRS | Rwy Idg | 3397 |
| 250° | TDZE | 70 |
| | Apt Elev | 70 |

RNAV (GPS) RWY 25

WISCASSET (IWI)

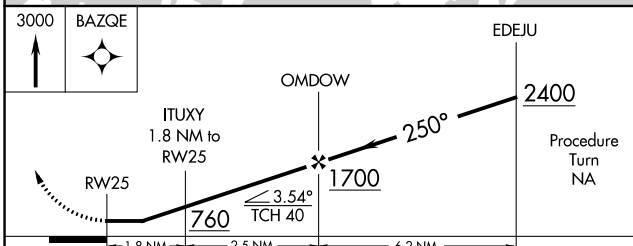
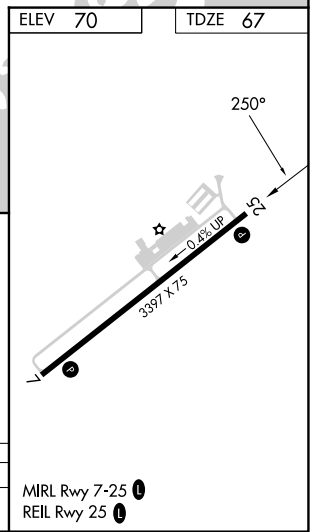
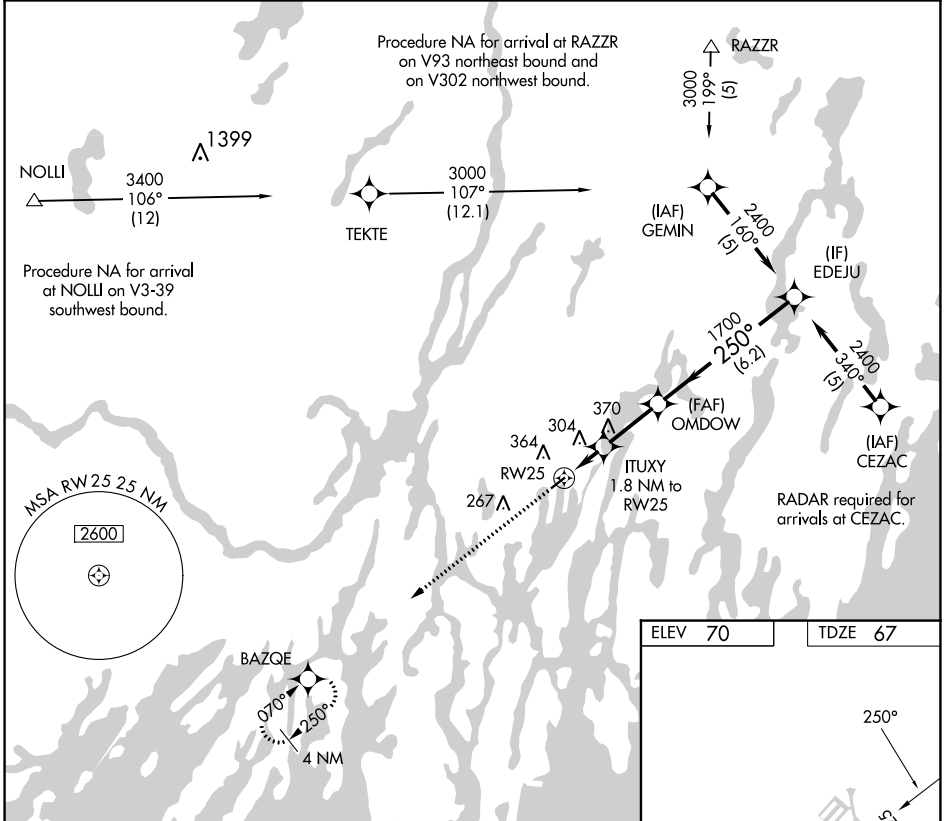
RNP APCH.

Procedure NA at night. Rwy 25 helicopter visibility reduction below 1 SM NA. When local altimeter setting not received use Rockland altimeter setting and increase all MDA 80 feet.

MISSED APPROACH: Climb to 3000 direct BAZQE and hold.

| | |
|----------------|----------------------------------|
| ASOS | PORTLAND APP CON★ |
| 135.725 | 119.75 269.35 (112°-292°) |
| | 120.4 299.2 (293°-111°) |

| |
|---------------------|
| UNICOM |
| 122.8 (CTAF) |



| | | | | |
|----------|-------|-------------|----|---|
| CATEGORY | A | B | C | D |
| LNAV MDA | 580-1 | 513 (600-1) | NA | |

NE-1, 26 DEC 2024 to 23 JAN 2025

NE-1, 26 DEC 2024 to 23 JAN 2025