

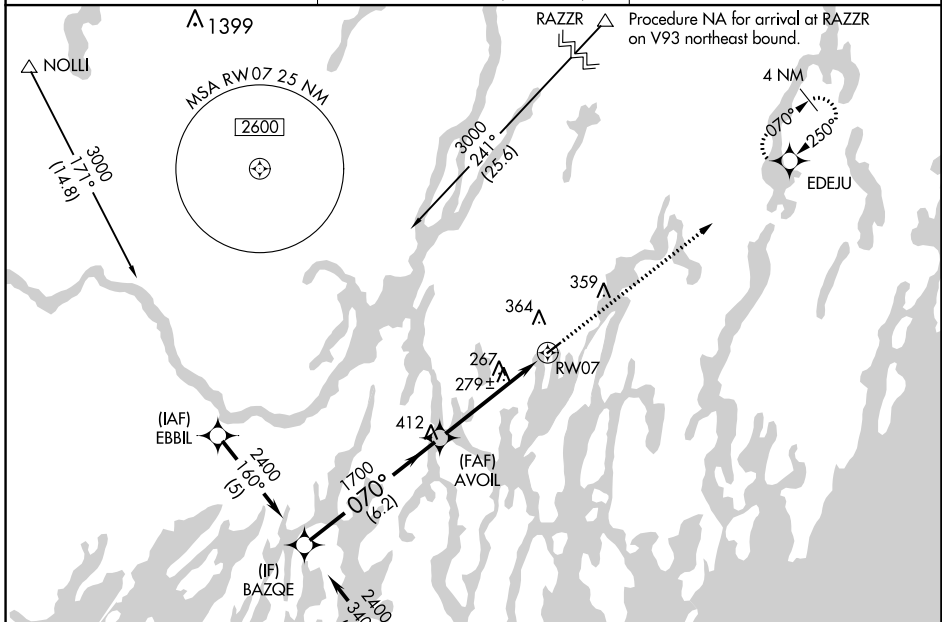
APP CRS	Rwy Idg	<b>3397</b>
<b>070°</b>	TDZE	<b>70</b>
	Apt Elev	<b>70</b>

# RNAV (GPS) RWY 7

WISCASSET (IWI)

RNP APCH.	<p>Procedure NA at night. Rwy 7 helicopter visibility reduction below 1 SM NA. When local altimeter setting not received use Rockland altimeter setting and increase all MDA 80 feet.</p>	MISSED APPROACH: Climb to 3000 direct EDEJU and hold.
-----------	---	---

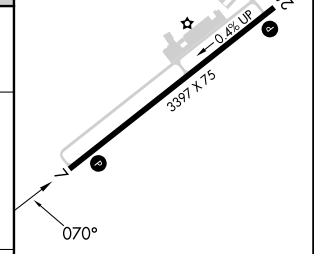
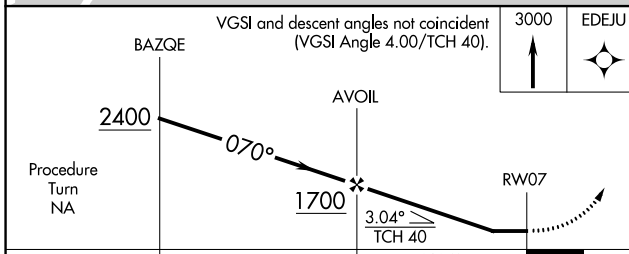
ASOS <b>135.725</b>	PORTLAND APP CON★ <b>119.75 269.35</b> (112°-292°) <b>120.4 299.2</b> (293°-111°)	UNICOM <b>122.8</b> (CTAF) <b>0</b>
------------------------	---	--



ELEV 70	TDZE 70
---------	---------

Procedure NA for arrival at SAPPE on V268 southbound.

Procedure NA for arrival at RAZZR on V93 northeast bound.



CATEGORY	A	B	C	D
LNAV MDA	560-1	490 (500-1)		NA

MIRL Rwy 7-25 **0**  
REIL Rwy 25 **0**

NE-1, 26 DEC 2024 to 23 JAN 2025

NE-1, 26 DEC 2024 to 23 JAN 2025