

WAAS CH 70421 W19A	APP CRS 192°	Rwy Idg TDZE Apt Elev	3500 895 895
--	------------------------	-----------------------------	---

RNAV (GPS) RWY 19

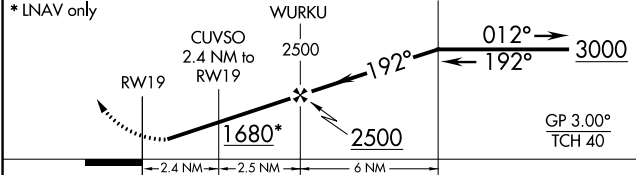
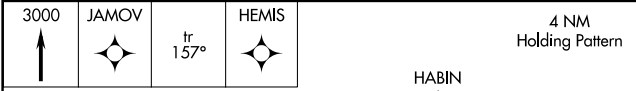
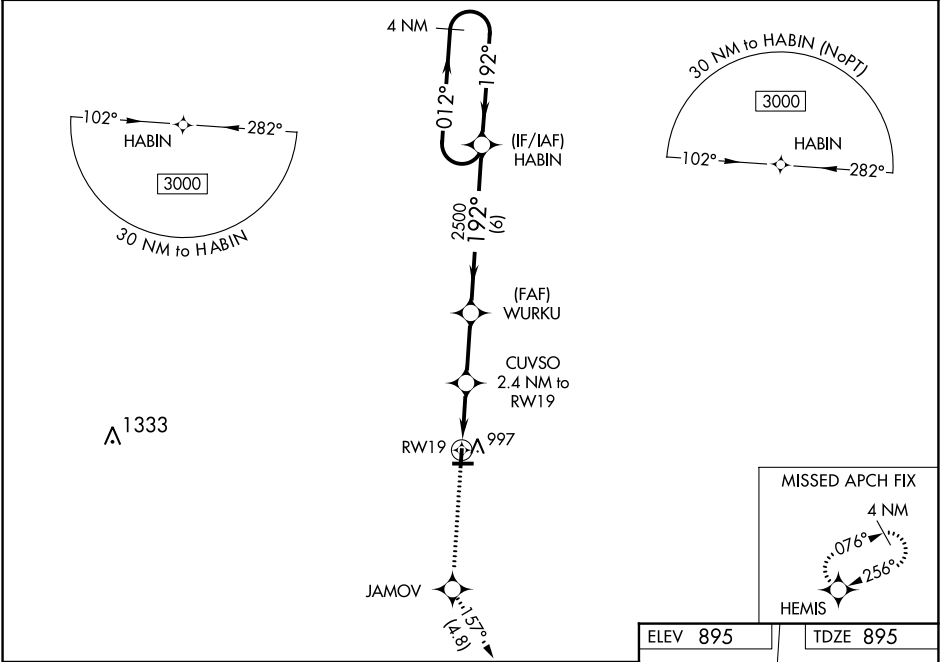
MARLETTE TOWNSHIP (77G)

RNP APCH.

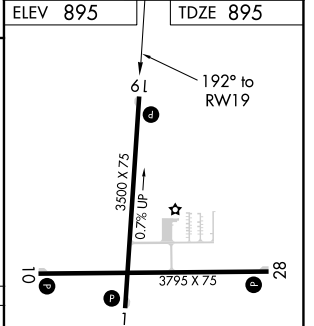
NA Baro-VNAV NA. Rwy 19 helicopter visibility reduction below 1 SM NA. Use Caro altimeter setting; when not received use Bad Axe altimeter setting and increase LPV DA to 1230 feet; increase LNAV/VNAV DA to 1280 feet; increase all MDA 20 feet and Circling Cat D visibility ¼ SM. Straight-in Rwy 19 NA at night, Circling Rwy 10, 19 NA at night.

MISSED APPROACH: Climb to 3000 direct JAMOV and on track 157° to HEMIS and hold.

CFS AWOS-3 119.275	CLEVELAND CENTER 127.7 290.425	UNICOM 122.8 (CTAF) 0
------------------------------	--	---------------------------------



CATEGORY	A	B	C	D
LPV DA		1214-1 1/8	319 (400-1 1/8)	
LNAV/VNAV DA		1264-1 1/4	369 (400-1 1/4)	
LNAV MDA	1340-1	445 (500-1)	1340-1 3/8	445 (500-1 3/8)
C CIRCLING	1460-1	565 (600-1)	1460-1 1/2	1560-2 665 (700-2)



ELEV 895	TDZE 895
----------	----------

MIRL Rwy 1-19 and 10-28 0

EC-1, 26 DEC 2024 to 23 JAN 2025

EC-1, 26 DEC 2024 to 23 JAN 2025