

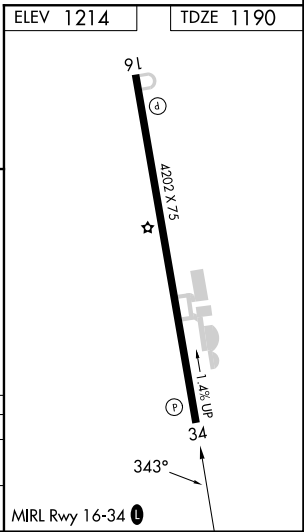
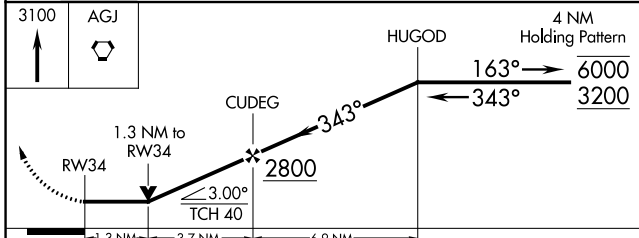
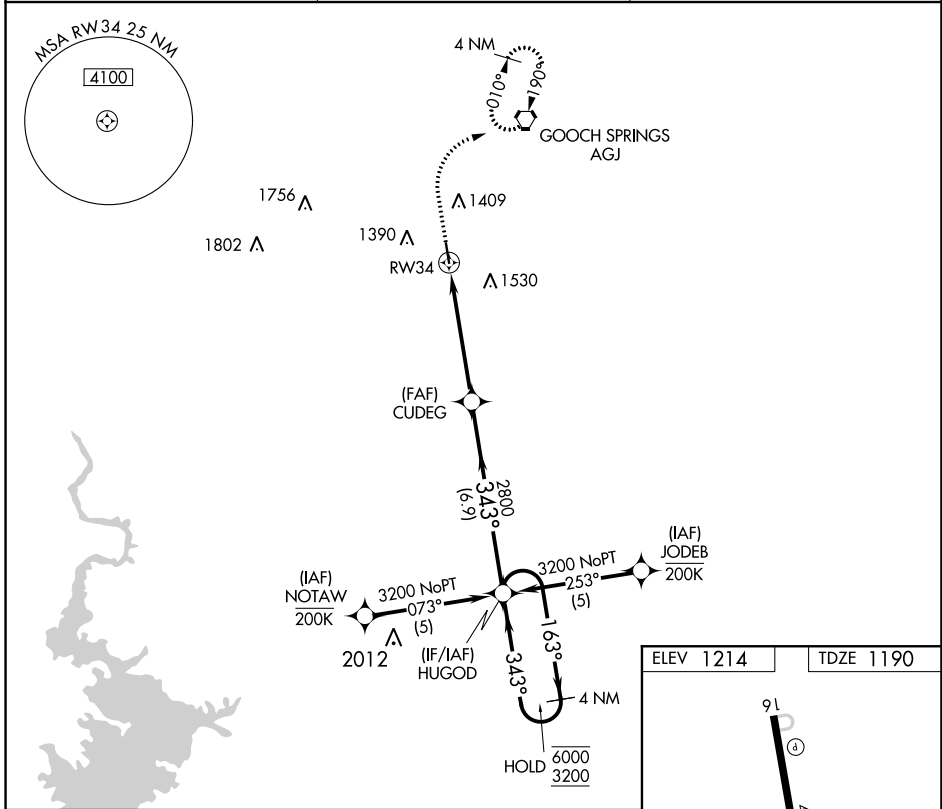
APP CRS 343°	Rwy Idg TDZE Apt Elev	4202 1190 1214
------------------------	-----------------------------	---

RNAV (GPS) RWY 34

LAMPASAS (LZZ)

RNP APCH - GPS.	MISSED APPROACH: Climb to 3100 direct AGJ VORTAC and hold, continue climb-in-hold to 3100.
<p>▼ Rwy 34 helicopter visibility reduction below 3/4 SM NA.</p> <p>▲ Circling Rwy 16 NA at night.</p>	

AWOS-3 119.075	GRAY APP CON 120.075 323.15	UNICOM 122.8 (CTAF) 0
--------------------------	---------------------------------------	---------------------------------



CATEGORY	A	B	C	D
LNVA MDA	1620-1	430 (500-1)	1620-1¼ 430 (500-1¼)	NA
CIRCLING	1760-1 546 (600-1)	1880-1 666 (700-1)	1880-1¾ 666 (700-1¾)	NA

SC-3, 26 DEC 2024 to 23 JAN 2025

SC-3, 26 DEC 2024 to 23 JAN 2025