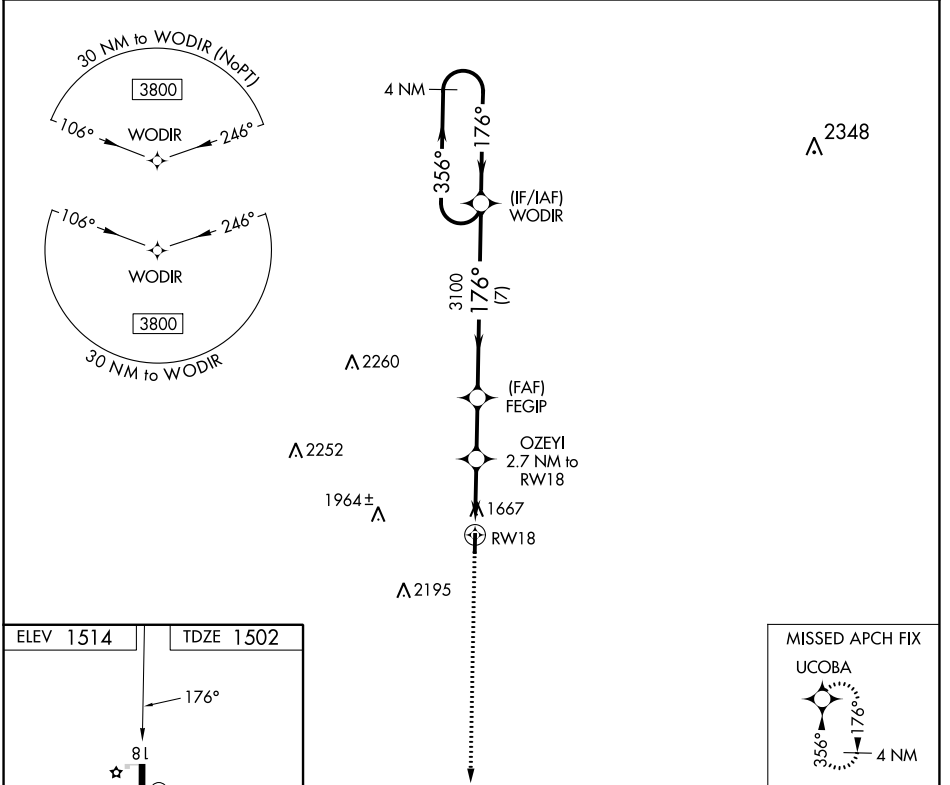


APP CRS	Rwy Idg	3716
176°	TDZE	1502
	Apt Elev	1514

RNAV (GPS) RWY 18

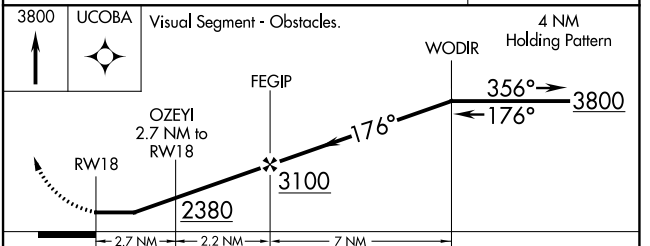
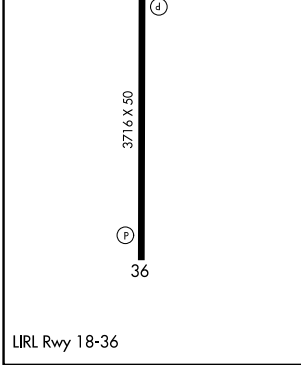
MASON COUNTY (T92)

<p>▼ Rwy 18/36 helicopter visibility reduction below 1 SM NA. DME/DME RNP-0.3 NA. Procedure NA at night.</p> <p>▲ NA Use Brady altimeter setting; when not received, use Llano altimeter setting and increase all MDAs 20 feet.</p>	MISSED APPROACH: Climb to 3800 direct UCOBA and hold.	
BBD AWOS-3 118.375	HOUSTON CENTER 132.35 317.5	CTAF 122.9



SC-3, 26 DEC 2024 to 23 JAN 2025

SC-3, 26 DEC 2024 to 23 JAN 2025



CATEGORY	A	B	C	D
LNVA MDA	2080-1	578 (600-1)	NA	
☑ CIRCLING	2140-1	626 (700-1)	NA	