

WAAS CH 86316 W16A	APP CRS 165°	Rwy Idg TDZE Apt Elev	6003 318 318
--	------------------------	-----------------------------	---

RNAV (GPS) RWY 16

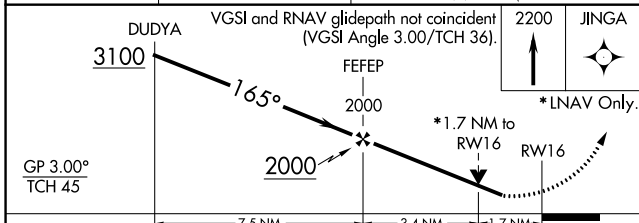
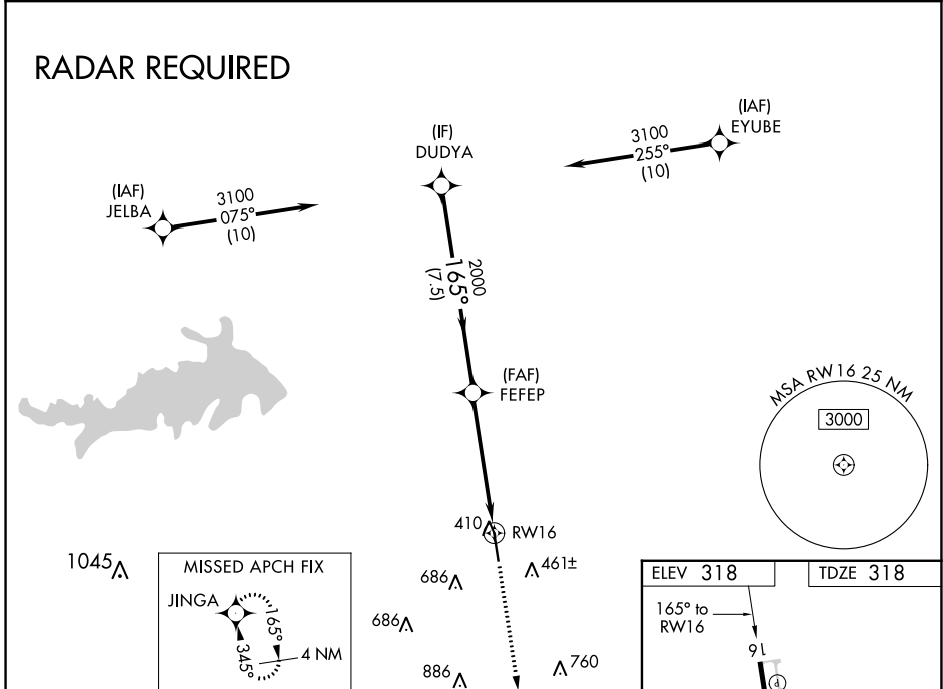
BRENHAM MUNI (11R)

RNP APCH.

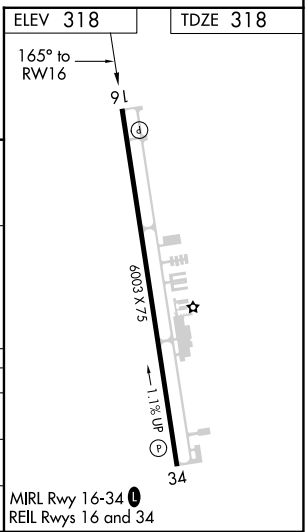
⚠ Rwy 16 helicopter visibility reduction below 3/4 SM NA. For uncompensated Baro-VNAV systems, LNAV/VNAV NA below -15°C or above 37°C. When local altimeter setting not received, use College Station altimeter setting and increase all DA 52 feet, and all MDA 60 feet, increase LPV and LNAV/VNAV all Cats and LNAV Cats C/D visibility 1/4 SM. VDP and Baro-VNAV NA with College Station altimeter setting.

MISSED APPROACH: Climb to 2200 direct JINGA and hold.

AWOS-3 121.125	HOUSTON APP CON 134.3 360.85	UNICOM 123.075 (CTAF) ①
--------------------------	--	-----------------------------------



		7.5 NM		3.4 NM		1.7 NM	
CATEGORY		A	B	C	D		
LPV	DA	594-7/8		276 (300-7/8)			
LNAV/VNAV	DA	680-1 1/4		362 (400-1 1/4)			
LNAV	MDA	880-1	562 (600-1)	880-1 1/8	562 (600-1 1/8)		



SC-5, 26 DEC 2024 to 23 JAN 2025

SC-5, 26 DEC 2024 to 23 JAN 2025

MIRL Rwy 16-34 ①
REIL Rwys 16 and 34