

WAAS CH 56524 W04A	APP CRS 040°	Rwy Idg 4401 TDZE 34 Apt Elev 35
--	------------------------	---

RNAV (GPS) RWY 4

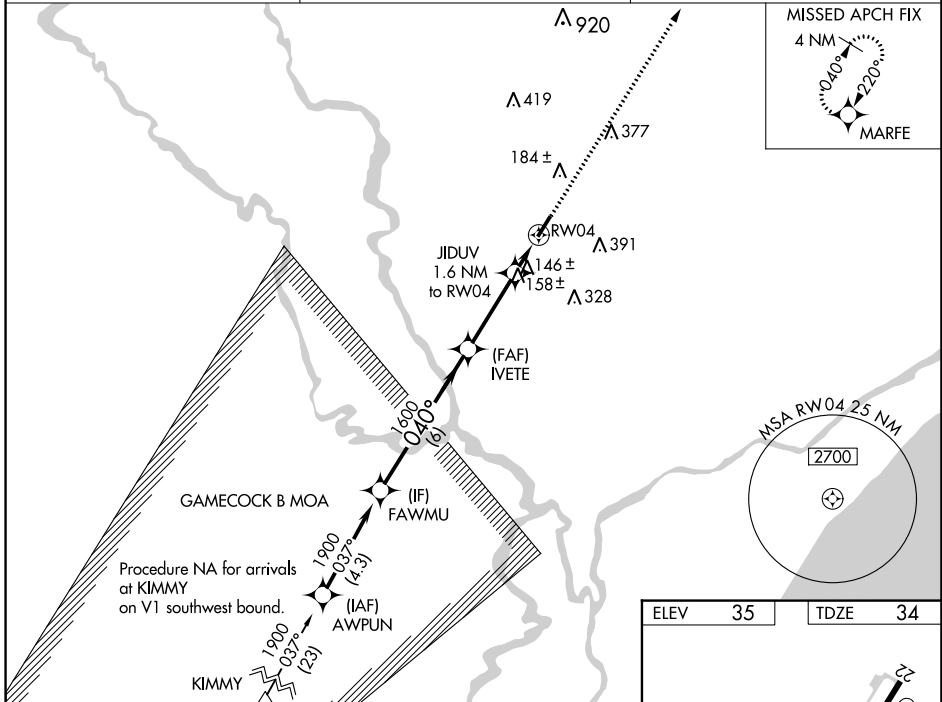
CONWAY-HORRY COUNTY (HYW)

RNP APCH.

⚠ When Circling to Rwy 22 at night, operational VGSI required, remain on or above VGSI glidepath until threshold. Rwy 4 helicopter visibility reduction below ¾ SM NA. For uncompensated Baro-VNAV systems, LNAV/VNAV NA below -15°C or above 54°C.

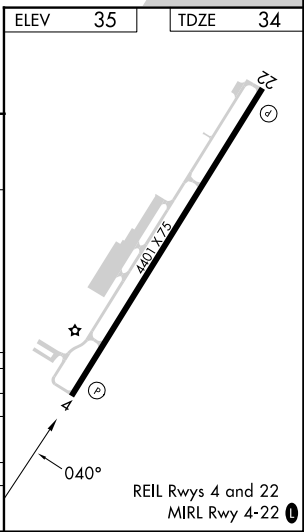
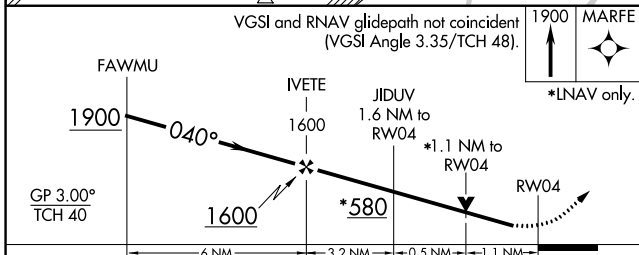
MISSED APPROACH: Climb to 1900 direct MARFE and hold.

AWOS-3 119.525	MYRTLE BEACH APP CON★ 127.4 257.95	UNICOM 122.7 (CTAF)
--------------------------	--	-------------------------------



SE-2, 26 DEC 2024 to 23 JAN 2025

SE-2, 26 DEC 2024 to 23 JAN 2025



CATEGORY	A	B	C	D
LPV DA		315-7/8	281 (300-7/8)	
LNAV/DA VNAV		525-13/8	491 (500-13/8)	
LNAV MDA	460-1	426 (500-1)	460-1/4	426 (500-1/4)
C CIRCLING	520-1 485 (500-1)	540-1 505 (600-1)	700-1 3/4 665 (700-1 3/4)	700-2 665 (700-2)