

WAAS CH <b>70603</b> W33A	APP CRS <b>328°</b>	Rwy Idg TDZE Apt Elev	<b>4000</b> <b>367</b> <b>367</b>
---------------------------------	------------------------	-----------------------------	---

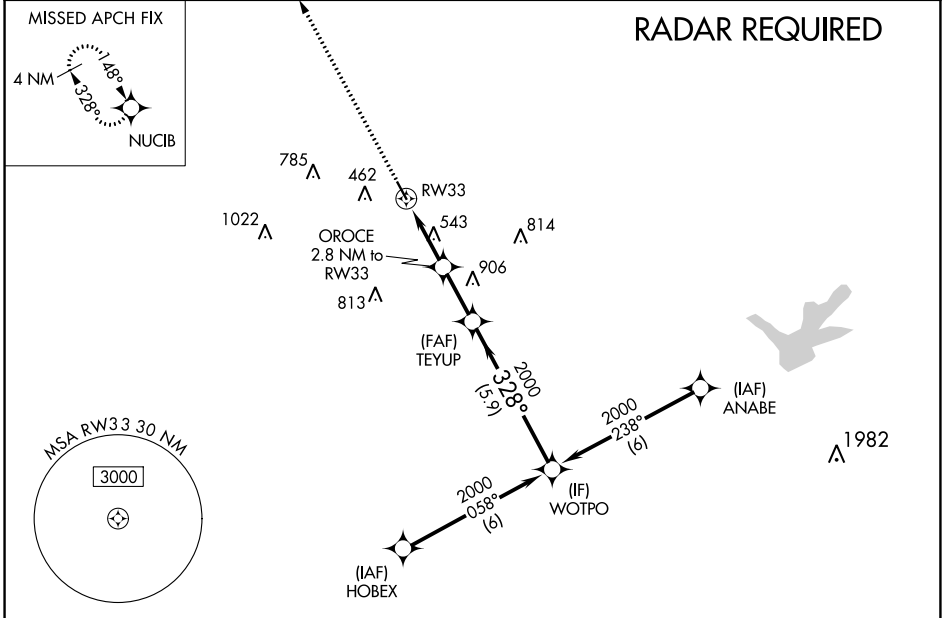
# RNAV (GPS) RWY 33

COULTER FLD (CFD)

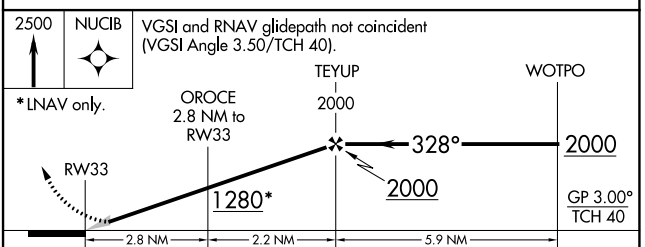
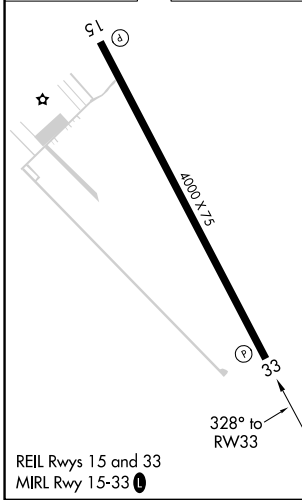
RNP APCH.  
 ▽ NA Baro-VNAV NA. Use College Station altimeter setting; when not received, use Caldwell altimeter setting and increase all DA 31 feet and all MDA 40 feet.

MISSED APPROACH: Climb to 2500 direct NUCIB and hold.

AWOS-3PT <b>125.975</b>	CLL ASOS <b>126.85</b>	HOUSTON APP CON <b>134.3 360.85</b>	UNICOM <b>123.0 (CTAF) 0</b>
----------------------------	---------------------------	--	---------------------------------



ELEV 367	TDZE 367
----------	----------



CATEGORY	A	B	C	D
LPV DA	642-1	275 (300-1)	NA	
LNAV/VNAV DA	642-1	275 (300-1)	NA	
LNAV MDA	880-1	513 (600-1)	NA	

SC-5, 26 DEC 2024 to 23 JAN 2025

SC-5, 26 DEC 2024 to 23 JAN 2025