

NDB SN <b>312</b>	APP CRS <b>246°</b>	Rwy Idg <b>8010</b>
		TDZE <b>210</b>
		Apt Elev <b>215</b>

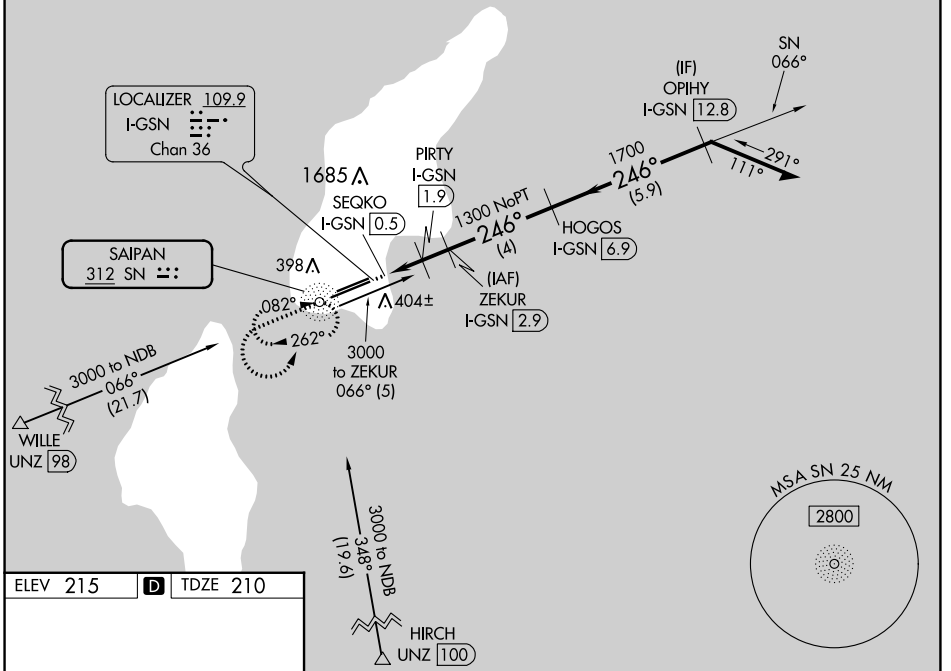
# NDB RWY 25

FRANCISCO C ADA/SAIPAN INTL (GSN)(PGSN)

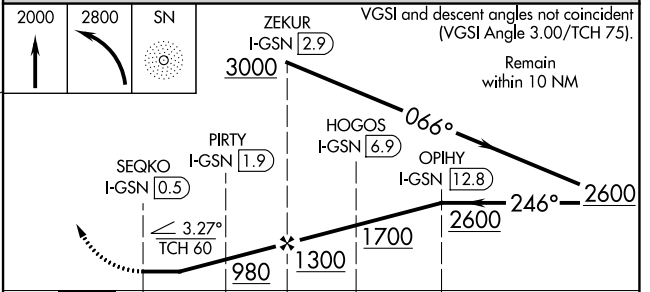
<p><b>▼</b> Circling NA north of Rwy 6-24. Rwy 25 helicopter visibility reduction below ¼ SM NA. DME required.</p>	<p>MISSED APPROACH: Climb to 2000 then climbing left turn to 2800 direct SN NDB and hold.</p>
--	---

<p>ATIS <b>127.2</b></p>	<p>GUAM CERAP <b>118.4 290.5</b></p>	<p>SAIPAN TOWER <b>125.7 256.9</b></p>	<p>GND CON <b>121.8</b></p>
------------------------------	--	--	---------------------------------

## DME REQUIRED



ELEV 215	<b>D</b>	TDZE 210
<p>REIL Rwy 7 and 25 HIRL Rwy 7-25 MIRL Rwy 6-24</p>		



CATEGORY	A	B	C	D
S-25	720-1	510 (600-1)	720-1 <sup>3</sup> / <sub>8</sub>	510 (600-1 <sup>3</sup> / <sub>8</sub> )
<b>C</b> CIRCLING	720-1	505 (600-1)	720-1 <sup>1</sup> / <sub>2</sub> 505 (600-1 <sup>1</sup> / <sub>2</sub> )	780-2 565 (600-2)