

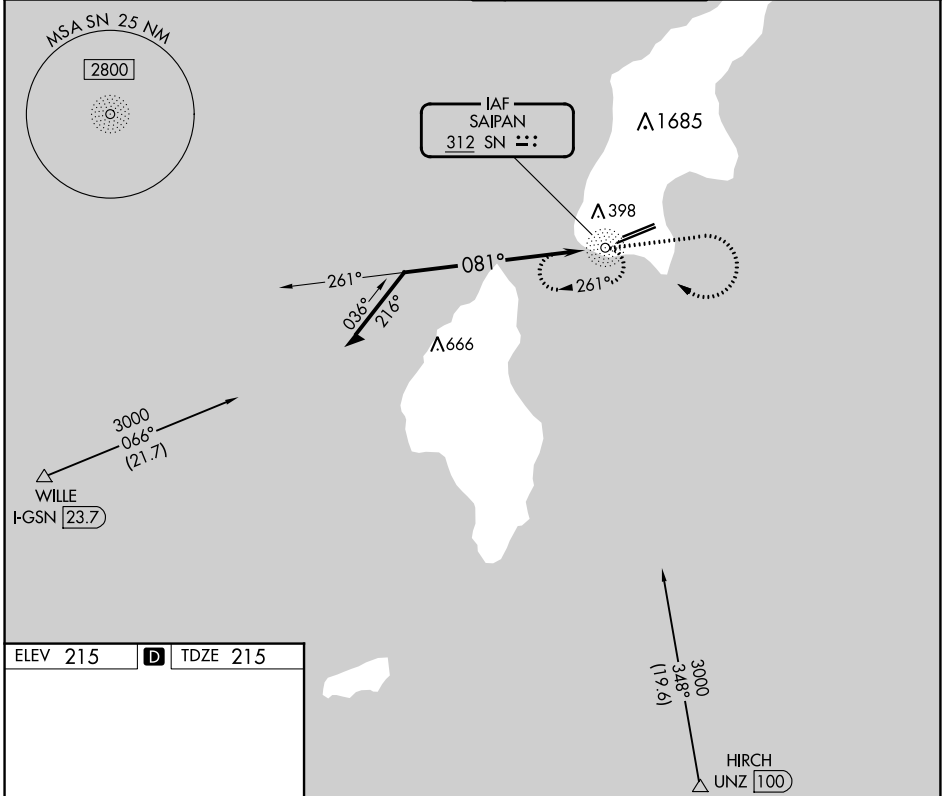
NDB SN <b>312</b>	APP CRS <b>081°</b>	Rwy Idg <b>8010</b>
		TDZE <b>215</b>
		Apt Elev <b>215</b>

# NDB Y RWY 7

FRANCISCO C ADA/SAIPAN INTL (GSN)(PGSN)

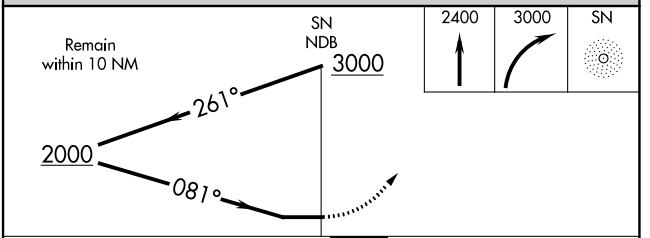
	Circling NA north of Rwy 6-24.	MALSR 	MISSED APPROACH: Climb to 2400 then climbing right turn to 3000 direct SN NDB and hold.

ATIS <b>127.2</b>	GUAM CERAP <b>118.4 290.5</b>	SAIPAN TOWER <b>125.7 256.9</b>	GND CON <b>121.8</b>
----------------------	----------------------------------	------------------------------------	-------------------------



ELEV 215	<b>D</b>	TDZE 215
----------	----------	----------

REIL Rwy 7 and 25  
HIRL Rwy 7-25  
MIRL Rwy 6-24



CATEGORY	A	B	C	D
S-7	900-3/4	685 (700-3/4)	900-1 1/2	685 (700-1 1/2)
<b>C</b> CIRCLING	900-1	685 (700-1)	900-2 685 (700-2)	900-2 1/4 685 (700-2 1/4)

PAC, 26 DEC 2024 to 20 FEB 2025

PAC, 26 DEC 2024 to 20 FEB 2025