

| | | | |
|--|------------------------|-----------------------------|---|
| WAAS CH 56312 W07A | APP CRS 072° | Rwy Idg TDZE Apt Elev | 4703 913 913 |
|--|------------------------|-----------------------------|---|

RNAV (GPS) RWY 7

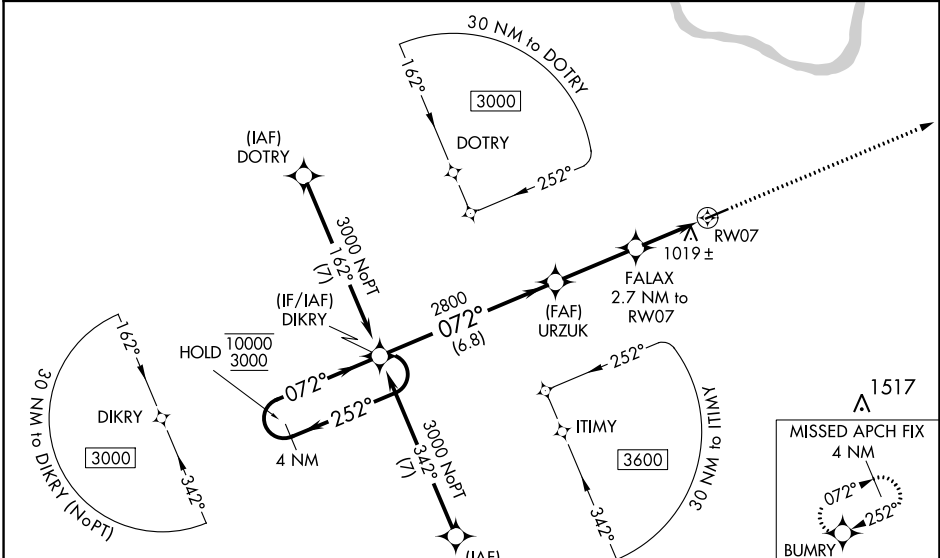
FLEMING-MASON (F'GX)

RNP APCH - GPS.

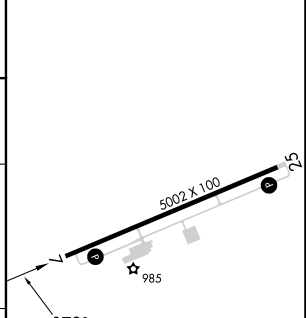
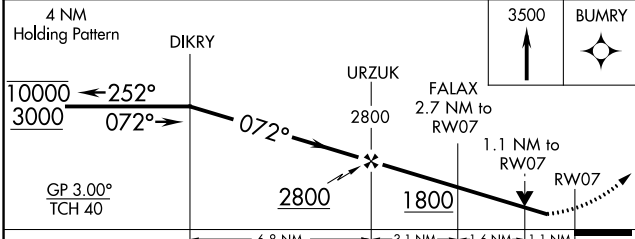
⚠ Baro-VNAV and VDP NA when using Blue Grass altimeter setting. Rwy 7 helicopter visibility reduction below 3/4 SM NA. For uncompensated Baro-VNAV systems, LNAV/VNAV NA below -16°C or above 54°C. When local altimeter setting not received, use Lexington altimeter setting and increase LPV DA to 1290 feet and all visibilities 1/4 SM; increase LNAV/VNAV DA to 1327 feet and all visibilities 1/4 SM; increase all MDAs 140 feet and LNAV visibility Cat C/D 3/8 SM.

MISSED APPROACH: Climb to 3500 direct BUMRY and hold.

| | | |
|--------------------------|---|------------------------------|
| AWOS-3 118.125 | INDIANAPOLIS CENTER 124.225 360.725 | UNICOM 123.0(CTAF) |
|--------------------------|---|------------------------------|



| | |
|----------|-------------------|
| ELEV 913 | D TDZE 913 |
|----------|-------------------|



| CATEGORY | A | B | C | D |
|--------------|---|----------|---------------|---|
| LPV DA | | 1163-3/4 | 250 (300-3/4) | |
| LNAV/VNAV DA | | 1200-7/8 | 287 (300-7/8) | |
| LNAV MDA | | 1280-1 | 367 (400-1) | |

MIRL Rwy 7-25 **⓪**
REIL Rws 7 and 25 **⓪**

SE-1, 26 DEC 2024 to 23 JAN 2025

SE-1, 26 DEC 2024 to 23 JAN 2025