

WAAS CH <b>50333</b> <b>W01A</b>	APP CRS <b>013°</b>	Rwy Idg <b>3200</b> TDZE <b>857</b> Apt Elev <b>858</b>
--	------------------------	---

# RNAV (GPS) RWY 1

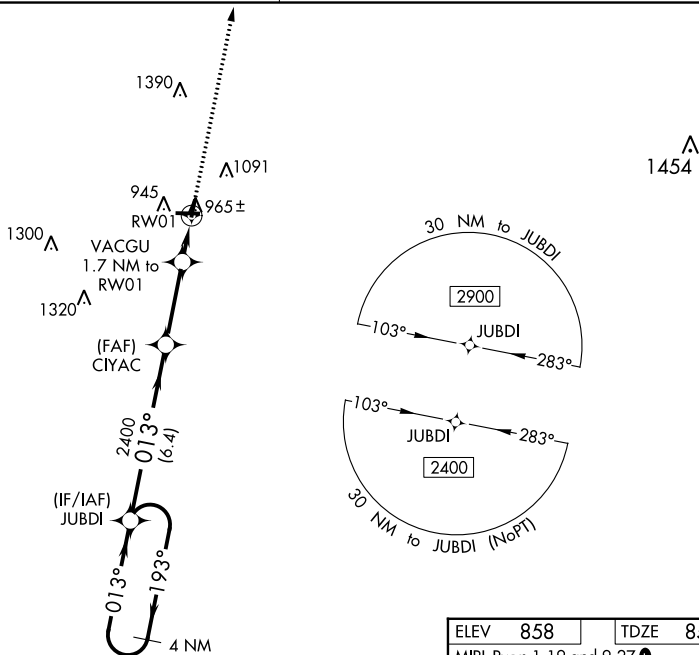
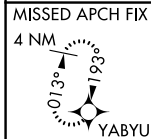
KEWANEE MUNI (EZI)

**▽** Baro-VNAV NA. DME/DME RNP-0.3 NA. Helicopter visibility reduction below ¼ SM NA.  
**▲ NA** Use Galesburg altimeter setting; when not received, use Moline altimeter setting and increase all DA 29 feet and all MDA 40 feet, increase LPV all Cats visibility ½ mile, and Circling Cat C visibility ¼ mile.

**MISSED APPROACH:**  
 Climb to 2400 direct YABYU and hold.

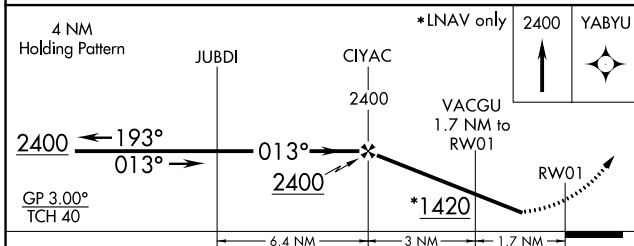
QUAD CITY APP CON ★  
**133.275 257.8**

UNICOM  
**122.8 (CTAF) 0**

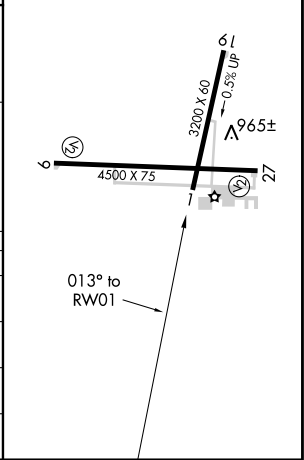


EC-3, 26 DEC 2024 to 23 JAN 2025

EC-3, 26 DEC 2024 to 23 JAN 2025



ELEV 858	TDZE 857
MIRL Rwys 1-19 and 9-27 0	



CATEGORY	A	B	C	D
LPV DA	1182-1½	325 (400-1½)		NA
LNNAV/VNAV DA	1212-1¼	355 (400-1¼)		NA
LNNAV MDA	1300-1	443 (500-1)	1300-1⅜ 443 (500-1⅜)	NA
<b>C</b> CIRCLING	1340-1 482 (500-1)	1520-1 662 (700-1)	1520-1¼ 662 (700-1¼)	NA